

ITEM 5

DRAFT PLANNING PROPOSAL - STAGE 1 HERITAGE SCHEDULE REVIEW -
HOUSEKEEPING AMENDMENTS TO EXISTING LOCAL HERITAGE ITEMS

The Wollongong Local Environmental Plan 2009 currently identifies 475 heritage items and nine Heritage Conservation Areas as being of significant. The Heritage Schedule was last substantially updated in 2009 and now requires various housekeeping amendments to reflect changes in property boundaries and property descriptions, as well as amending historic errors in items names and descriptions.

The purpose of this Report is to progress Stage 1 of the Heritage Schedule Review Project which includes relatively minor housekeeping amendments to existing local heritage items. It is noted that the progression of Stage 2 of the Heritage Review, which relates to the potential listing of new local heritage items will be subject to a separate report to Council. The proposal was supported by the Wollongong Local Planning Panel, and it is recommended that Council resolve to prepare a draft Planning Proposal.

RECOMMENDATION

- 1 A draft Planning Proposal be prepared to progress various housekeeping amendments to the heritage list contained within Schedule 5 and the Heritage Maps of the Wollongong Local Environmental Plan 2009, as detailed in Attachments 1 and 2.
- 2 The draft Planning Proposal be forwarded to the NSW Department of Planning, Industry and Environment for Gateway Determination.
- 3 Should a Gateway Determination be issued, the draft Planning Proposal be placed on public exhibition for a minimum period of 28 days.
- 4 The Department of Planning, Industry and Environment be requested to issue authority to the General Manager to exercise plan making delegation in accordance with Council's resolution of 26 November 2012.

REPORT AUTHORISATIONS

Report of: Chris Stewart, Manager City Strategy

Authorised by: Linda Davis, Director Planning + Environment - Future City + Neighbourhoods

ATTACHMENTS

- 1 List of Proposed Amendments to Schedule 5 of the Wollongong Local Environment Plan 2009
- 2 Map Book - Proposed Amendments to Existing Heritage Curtilages
- 3 Recommendations of the Wollongong Local Planning Panel Dated 2 April 2020

BACKGROUND

Council has an ongoing role in managing and conserving the broad range of natural and cultural heritage sites throughout the Local Government Area (LGA). There are 475 heritage items and nine Conservation Areas currently listed in Schedule 5 of the Wollongong Local Environmental Plan 2009 with associated curtilages mapped in the LEP Heritage Maps. An additional seven (7) items are listed under the State Environmental Planning Policy (Three Ports) 2013 and the State Environmental Planning Policy (State Significant Precincts) 2009 for items within the Calderwood and Sandon Point precincts. There are also 24 sites listed as State Heritage items under the NSW Heritage Act 1977, which are also reflected in the LEP.

The listing in the LEP heritage schedule generally covers the whole of the property, but the listing description can explain further the elements that are significant; for example, the house, the gardens, the interiors, and/or any other elements.

An inventory sheet known as a State Heritage Inventory Form (SHI Form) is prepared for each item. In earlier decades, this would essentially be a field record sheet, but current industry practices require a detailed assessment of heritage values. The SHI Form can be used as part of development assessment, heritage management or to inform court proceedings. The heritage listings and inventory information are also an important resource for owners and prospective applicants. Up-to-date information provides certainty and assists in streamlining design and application processes and provides a basis for access to conservation incentive schemes.

Heritage Schedule Review Project

On 28 July 2010 Council resolved to undertake a major review of the Heritage Schedule in the Wollongong Local Environmental Plan 2009. The preparation of a new Thematic History of Wollongong was the first step of this Review. The Thematic History was adopted by Council on 11 February 2011 and historic themes were identified as a basis for the review of the Heritage Schedule.

Since this time, Council officers and Council's consultant Heritage Advisor have been reviewing and compiling detailed inventory forms and information in relation to all existing heritage items. This inventory information has been uploaded onto the State Heritage Inventory database on the Heritage NSW Website so that the history and significance of heritage items is clearly defined and readily available. This information did not previously exist. Due to the large number of items, this has been a significant task and has taken considerable time and resources. This process has also allowed each heritage properties listing details within the Wollongong Local Environmental Plan 2009 to be reviewed and for necessary amendments to be identified.

On 17 September 2018 Councillors were briefed on the progression of the Wollongong Heritage Schedule Review Project. The Heritage Schedule Review project will be reported in 2 Stages with two separate draft Planning Proposals.

- Stage 1 (the subject of this report), deals with more minor housekeeping amendments to existing heritage items.
- Stage 2 (subject to a future report), will seek to progress a number of potential new heritage items that have been identified. This Stage 2 report is anticipated to progress following initial consultation with owners and is anticipated to require significant consultation and consideration.

On 28 October 2019 Council resolved to endorse the Wollongong Heritage Strategy and Implementation Plan 2019-2022. Strategy 2 *Maintain an up to date list of heritage items* and Action 2.1 in the Implementation Plan "Finalise the review of the Wollongong Heritage Schedule and update the State Heritage Inventory accordingly" specifically relates to the recommendations of this report.

Aboriginal Cultural Heritage

The Wollongong City Council Local Government Area is rich in Indigenous history and the traditional owners and local Aboriginal Community are active in caring for Country and managing both tangible and intangible forms of cultural heritage. Sandon Point and Bellambi Point Aboriginal Places are listed under the NSW National Parks and Wildlife Act 1974 and Hill 60 is recognised on the State Heritage Register under the NSW Heritage Act 1977 for its outstanding Aboriginal Heritage values.

Aboriginal Heritage sites are largely managed under the NSW National Parks and Wildlife Act 1974 and are listed on the Aboriginal Heritage Information Management Register (AHIMs), managed by the Department of Planning, Industry and Environment (former Office of Environment and Heritage). Due to the sensitive nature of many sites, the local Aboriginal Community has consistently expressed the view that the Local Environmental Plan is not a culturally appropriate place to list many places of Aboriginal Cultural Heritage Significance. As a result, the number of listings on the Wollongong Local Environment Plan 2009 that are of significance for Aboriginal Heritage values is limited.

A Draft Aboriginal Cultural Heritage Bill (2017) is currently being prepared by the State Government to address a range of issues with the management of Aboriginal Heritage sites across NSW. The Draft Bill will broaden protection of Aboriginal Cultural Heritage (ACH) and ensure that the local Aboriginal

Community is the key holder of ACH knowledge and decision making. Council Staff continue to be active in providing feedback and input into the State Government legislative reforms.

PROPOSAL

The Wollongong Local Environmental Plan came into force on the 26 February 2010. As an outcome of the detailed review of items a large number of necessary housekeeping amendments to the heritage schedule have been identified to ensure that Schedule 5 is up to date.

These amendments are essential to ensure that Council has accurate heritage information to assist with customer enquiries, development applications, planning proposals and various Council projects. The types of minor amendments required to address various administrative issues in the listing include the following:

- Amending spelling errors in item names;
- Amending errors in addresses and listed suburbs;
- Adding Lot and Deposited Plan (DP) numbers to capture the full extent of an items curtilage due to shifting property boundaries or incorrect descriptions from 2009;
- Updating Lot and DP's to reflect changes in property descriptions such as subdivisions that have reduced the curtilage of an item since 2009; and
- Changing the level of significance of items from local to State to reflect the state listing of items under the NSW Heritage Act 1977;
- Removal of nine items that have been demolished or are now covered by other heritage legislation (listed below);
- Re-listing two items that are mapped as heritage items in the Wollongong Local Environmental Plan 2009 Heritage Maps but do not appear on Schedule 5 due to administrative errors in 2009 (listed below).

The State Heritage Inventory (SHI) Forms for all existing heritage items have now been updated with additional historic information, updated photographs and various other amendments. The SHI Forms are accessible via the NSW Heritage Inventory and can be accessed via the NSW Heritage Database website: <https://www.environment.nsw.gov.au/heritageapp/heritagesearch.aspx>

The proposal is to prepare and exhibit a draft Planning Proposal to progress various administrative updates and amendments to the list of existing heritage items within Schedule 5 of the Wollongong Local Environmental Plan 2009. Attachment 1 lists the housekeeping amendments required.

Each item listed on Schedule 5 of the Wollongong Local Environmental Plan 2009 is also mapped with a heritage "curtilage" in the Local Environmental Plan Maps. Attachment 1 lists the changes to the LEP Heritage Maps that are also required to reflect the above administrative changes and address historic inaccuracies in mapping. The existing mapped curtilages of affected items and the proposed changes are also shown in Attachment 2.

Removal of Items

The draft Planning Proposal proposes the removal of seven items from Schedule 5 of the Wollongong Local Environmental Plan 2009 due to demolition or reassessment of their heritage significance.

These items include:

- 1 *Former Guest House* 300-302 Princes Highway, Bulli (#6187) - Building Demolished by RMS;
- 2 *Stand of Norfolk Island Pines* Lawrence Hargrave Drive, Clifton (#6136) - Trees were removed by RMS during construction of the Sea Cliff Bridge;
- 3 *Site of former cottage* 12 Robertson Street, Helensburgh (#6101) - Building was destroyed by fire & subsequently demolished;

- 4 *House 1 Taronga Avenue, Mangerton (#6279)* - Assessment of Heritage Significance completed by Zoran Popovic October 2014 recommends item should be removed from LEP Heritage Schedule. In 2019, development application DA-2018/1355 was approved by the Wollongong Local Planning Panel for demolition of the building and construction of a dual occupancy. The heritage assessment was considered as part of the development application assessment. The building has recently been demolished;
- 5 *Mural 189-191 Wentworth Street, Port Kembla (#6309)* - Mural has been assessed as not meeting the criteria for listing. Is intended to be replaced due to poor condition in consultation with the local Community; and
- 6 *Avenue of plantings Keerong Street, Russell Vale (#6203)* - Assessment of Heritage Significance completed by Zoran Popovic in 2014 recommends removal from LEP Heritage Schedule. Aerial photos indicate that the trees were planted between 1961 and 1977, and while the trees are a landscape feature they don't have heritage significance. It is noted that no trees are intended to be removed by Council; and
- 7 *Norfolk Island Pines Mitchell Road, Woonona (#6516)* – The Norfolk Island Pines were located between Gray Street and Kialoa Road and were removed by the RMS in 2006-8 for the Northern Distributor / Memorial Drive extension.

Two items are also proposed to be removed from the Heritage Schedule of the Wollongong Local Environmental Plan 2009 as they are located on land which is no longer covered by this Environmental Planning Instrument. Both items are now covered by State Environmental Planning Policies. These items are:

- 1 Historical military museum including break water battery and concrete tank barriers (#6302) -Listed under the State Environmental Planning Policy (Three Ports) 2013; and
- 2 Marshall Mount Homestead and barn (#5914) - Listed under the State Environmental Planning Policy (Major Projects) 2009 - Calderwood.

Re-Introduction of Items

Two items are proposed to be re-introduced to Schedule 5 that were previously left off the list due to an administrative error in the implementation of the Wollongong Local Environmental Plan 2009. These items were both listed in the Wollongong Local Environmental Plan 1990 and are both currently mapped as heritage items within the Wollongong Local Environmental Plan Heritage Maps but were inadvertently left off the schedule during the previous review. These items are:

- 1 Hillside Farm, 295 Sheaffes Road, Dombarton (#61045); and
- 2 Wollongong Trade School (TAFE) 38-46 Gladstone Avenue, Wollongong (#6467).

The addition of these items will rectify an anomaly in Schedule 5. Both landowners are aware of this issue and the items have continued to be managed as local heritage items for the purposes of the Wollongong Local Environmental Plan 2009 despite their current omission from the schedule.

CONSULTATION AND COMMUNICATION

Wollongong Heritage Reference Group

The Wollongong Heritage Reference group have provided ongoing input to the Wollongong Heritage Schedule Review project and have been provided with several reports in relation to the outcomes of the Stage 1 review. Stage 1 of the Project was considered by the Heritage Reference Group on 29 April 2020. The membership recommended that:

Council prepare and exhibit a draft Planning Proposal to progress the Stage 1 housekeeping amendments to the Heritage Schedule and update the associated LEP Heritage Maps accordingly.

Wollongong Local Planning Panel

Stage 1 of the Heritage Schedule Review Project was reported to the Local Planning Panel on the 2 April 2020 to obtain their advice on the Strategic Merit of the project, as required under the Environment Planning and Assessment Act 1979 prior to being reported to Council. The Local Planning Panel made the following recommendation:

The draft Planning Proposal for Stage 1 of the Wollongong Heritage Schedule Review Project has strategic merit as a Housekeeping amendment and should be progressed.

The full Panel advice is included as Attachment 3.

Owner Notification

The owners of affected properties will be notified of the proposed changes and amendments to the Wollongong Local Environmental Plan Heritage Schedule and of any associated mapping amendments during the public exhibition period. Owners will be invited to make comment or provide submissions in relation to the proposed amendments.

Following the exhibition process, a further report to Council detailing the outcomes of the exhibition process and any submissions received, will be provided to Council.

PLANNING AND POLICY IMPACT

This report contributes to the delivery of Our Wollongong 2028 goal “We value and protect our environment”. It specifically delivers on the following:

Community Strategic Plan	Delivery Program 2018-2021	Operational Plan 2019-20
Strategy	3 Year Action	Operational Plan Actions
1.4.1 Programs and projects that achieve proactive heritage management, education and promotion are developed and implemented	1.4.1.1 Work in partnership with others to promote a diverse range of heritage education and promotion programs	2 Coordinate the Heritage Reference Group

Further, this report directly responds to the Wollongong Heritage Strategy and Implementation Plan 2019-2022. Strategy 2 *Maintain an up to date list of heritage items* and Action 2.1 in the Implementation Plan “Finalise the review of the Wollongong Heritage Schedule and update the State Heritage Inventory accordingly”.

FINANCIAL IMPLICATIONS

There are no direct financial implications associated with the adoption of the recommendations within this report.

CONCLUSION

The Report details the proposal for Stage 1 of the Schedule Review Project which involves a wide range of housekeeping amendments to the Heritage Schedule of the Wollongong Local Environmental Plan 2009. This is essential to ensure Council’s Heritage Listings, within Schedule 5 of the Wollongong Local Environmental Plan 2009 are accurate and up to date. This Report directly implements on key strategies and actions from the Wollongong Heritage Strategy and Implementation Plan 2019-2022.

Stage 2 of the Heritage Schedule Review Project, relating to potential new heritage listings will be progressed as a separate Planning Proposal and report to Council following preliminary consultation with affected landowners.

Attachment 1: Heritage Schedule Review Project

Stage 1: Housekeeping Amendments to Wollongong LEP 2009 Schedule 5 Heritage Items and Heritage Map

Contents

Table 1: Proposed removals due to demolition or reassessment of significance	1
Table 2: Proposed removals due to item listed in a SEPP	2
Table 3: Proposed additions	3
Table 4: Minor Corrections to listing	4
Table 5: Proposed Mapping Changes	31

Table 1: Proposed removals due to demolition or reassessment of significance

The following items are recommended to be removed from the Wollongong Local Environmental Plan 2009 Heritage Schedule and Heritage Map due to demolition or reassessment of heritage significance.

Items highlighted in blue are under Wollongong City Council ownership or management

	Suburb	Item Name	Address	Item No.	Reason
1.	Bulli	Former Guest House	300-302 Princes Highway	6187	Item demolished
2.	Clifton	Stand of Norfolk Island Pines	Lawrence Hargrave Drive	6136	Trees have been removed by RMS during construction of sea cliff bridge.
3.	Helensburgh	Site of former cottage*	12 Robertson Street	6101	Assessment of Heritage Significance completed by Zoran Popovic June/ July 2013 recommends item should be removed from LEP Heritage Schedule. (Building was destroyed by fire & subsequently demolished).

Suburb	Item Name	Address	Item No.	Reason
4. Mangerton	House	1 Taronga Avenue	6279	Assessment of Heritage Significance completed by Zoran Popovic October 2014 recommends item should be removed from LEP Heritage Schedule. In 2019 a development application was approved by the Local Planning Panel for demolition. House has now been demolished.
5. Port Kembla	Mural	189-191 Wentworth Street	6309	Mural has been assessed as not meeting the criteria for listing. Is intended to be replaced due to poor condition in consultation with the local Community.
6. Russell Vale	Avenue of planting	Keerong Street	6203	Assessment of Heritage Significance completed by Zoran Popovic 2014 recommends this listing be removed from Schedule 5 of Wollongong LEP 2009.
7. Woonona	Norfolk Island pines	Mitchell Road	6516	Removed by RMS as part of the Northern Distributor/Memorial Drive expansion between 2006 and 2008.

Table 2: Proposed removals due to item listed in a SEPP

The following items are recommended to be removed from the Wollongong Local Environmental Plan 2009 Heritage Schedule and Heritage Map as they are located on land now covered by a SEPP:

Suburb	Item Name	Address	Item No.	Reason
1 Marshall Mount	"Marshall Mount" homestead and barn	Marshall Mount Road	5914	Listed as a heritage item under the Major Projects SEPP - Calderwood
2 Port Kembla	Historical military museum including break water battery and concrete tank barriers*	Between Eastern Breakwater and North Beach	6302	Location of actual items listed as a heritage item under the Three Ports SEPP. Added additional mapped area (not covered by SEPP) into consolidated Hill 60 listing (# 61043).

Table 3: Proposed additions

The following two items are recommended to be added to the Wollongong LEP Heritage Schedule as they were previously left off the schedule due to an administrative error. Both are included on the Heritage Maps.

The inclusion of other new additional items are progressed as part of the Heritage Review Stage 2 which will form a separate LEP amendment:

	Suburb	Item Name	Address	Significance	Item No.	Reason
1	Wollongong	Trade School (TAFE)	38-46 Gladstone Avenue	Local	6467	Administrative error This item was listed in Schedule 5 of the 1990 Wollongong LEP but was not integrated into 2009 Wollongong LEP. This item is mapped as a local heritage item in the 2009 Heritage Maps and is in effect treated as a local heritage item.
2	Dombarton	Hillside Farm	295 Sheaffes Road	Local	61045	Administrative error This item was listed in Schedule 5 of the 1990 Wollongong LEP but was not integrated into 2009 Wollongong LEP. This item is mapped as a local heritage item in the 2009 Heritage Maps and is in effect treated as a local heritage item.

Table 4: Minor Corrections to listing

These include minor administrative updates to item names, suburbs, addresses, property descriptions and level of significance from Local to State. This includes:

- Fixing spelling errors in item names;
- Adding Lots and DP's to capture full extent of an items curtilage due to shifting property boundaries or incorrect descriptions from 2009;
- Deleting Lots and DP's to reflect changes in property descriptions such as subdivisions that have reduced the curtilage of an item since 2009; and
- Changing level of significance from local to State to reflect the state listing of items under the NSW Heritage Act 1977 by NSW Heritage.

Changes are listed in red. Items highlighted in blue are under Wollongong City Council ownership or management:

	Suburb	Item Name	Address	Property Description	Significance	Item No	Reason
1.	Austinmer	House "Braemar"	1 Headland Avenue	Lot 2, DP 201973	Local	6147	Add name of house "Braemar" to item description
2.	Austinmer	Glastonbury Gardens	72-82 Lawrence Hargrave Drive Toxeth Avenue	Lot 2, DP 519285; Lot 29, DP 7559; Lot 3, DP 12378; Lot 6, DP 12378; Lot A, DP 373660; Lot C, DP 373660; Lot 1, DP 435733	Local	6153	Amend property description to add extra lots and DP to capture extent of Gardens in line with mapping
3.	Austinmer	Norfolk Island pines	Lawrence Hargrave Drive, Austinmer Main Beach	Lot 3, DP 1110343; Lot, 1 DP 172287; Lot 7020, DP 1071551	Local	6151	Amend property description to add extra lots and DP to capture extent of Pines
4.	Austinmer	Norfolk Island pines	North Austinmer Beach	Lot 99, DP 174418, Lots 96 - 100, DP 174418; Lot 1, DP 431661; Lot 7021 and DP 1071551.	Local	6152	Amend property description to add extra lots and DP to capture extent of Pines
5.	Austinmer	Uniting Church	48 Moore Street	Lot 11 & 12 Section C, DP 2111	Local	6507	Amend property description to capture extent of Church Also Heritage Map change – table 5
6.	Austinmer	"Workshop"	67-69 Moore Street	Lot 1, DP 301323; Lot 1 & 2 DP 1081245	Local	6149	Update address and update property description to match
7.	Austinmer	Austinmer Railway Station	End of Moore Street 1 Railway Lands	Rail reserve Lot 1, DP 1149493	State	6259	Add street address and update property description to match Also Heritage Map change – table 5

Suburb	Item Name	Address	Property Description	Significance	Item No	Reason
8. Austinmer	House "The Outlook"	14 Oceana Parade	Lot 1, DP 231287	Local	61004	Add name of House to item description
9. Austinmer	House "Cintra"	15 Wigram Road	Lot 18, DP 7559	Local	6150	Add name of House to item description
10. Austinmer	Norfolk Island pines on former Headlands Hotel site	Yuruga Street	Lots 87-95, DP 9233 Lots 100 and 101, DP 1212173	Local	6504	Amend name to reflect redevelopment of Headlands Hotel and amend Lot & DP
11. Austinmer	Norfolk Island Pines	Yuruga Street (corner Headlands Avenue)	Lot 1, DP 339004; Lot 7024, DP 1060923; Lot 1, DP 519277; Lot 7302, DP 1149797	Local	6144	Update property description to capture extent of Pines
12. Balgownie	Balgownie Community Centre	113 Balgownie Road	Lot 5, Section A, DP 938771 Lot 5 DP 1129933	Local	6215	Update property description to match address
13. Balgownie	Street Front Shop	135 - 137 Balgownie Road	Part Lot 2, DP 37904 and Part Lot 3, DP 584503	Local	6213	Update incorrect street address and update property description to match
14. Balgownie	Balgownie Hotel	141- 43 143 Balgownie Road	Lot 5, DP 872833	Local	61009	Update address to match property description
15. Balgownie	Balgownie Public School and residence	Balgownie Road (Corner Chalmers Street)	Part Lot 1, DP 709601	Local	6214	Amend name to reflect residence demolished prior to 1977
16. Bellambi	Bellambi Station Master's Residence	3 Brompton Road	Lot 1, DP 881773 Lot 2 DP 1193269	Local	6359	Add street number to address and update property description to match following subdivision
17. Bellambi	Bellambi Lake and Sandpit Point	Turner Esplanade	Lot 175, DP 726738; Part Lot 113, DP 751301; Lots 5 and 6, DP 240541; Lots 141 and 157, DP 247217; Lot 2, DP 615377; Lot 7011, DP 1057474; Lot 22, DP 1180717; Lot 7017, DP 1057474	Local	6204	Amend property description capture extent of Lake and Point
18. Berkeley Unanderra	Site of former "Berkeley House" *	23 Glastonbury Avenue and 191-195 Five Islands Road	Lot 401, DP 845805 and Lot 210, DP 811435	Local	6519	Incorrect Suburb in property description
19. Brownsville	Brownsville Cemetery, large fig trees and	33-37 Prince Edward Drive	Lot 18, DP 1023004 and Lot 1, DP 414418	Local	5915	Being amalgamated with item below (5915) with same listing number

	Suburb	Item Name	Address	Property Description	Significance	Item No	Reason
		Bunya-pine*					
20.	Brownsville	Osborne-Memorial St Luke's Church and Cemetery Complex (Including Church Hall and Landscape)*	33-37 35 Prince Edward Drive	Part Lot 18, DP 751263 and Lot 18, DP 1023004 Lot 203 DP 1234890	Local	5915	Update incorrect street address and update property description to match. Being amalgamated with item below with same listing number (5915). Also Heritage Map change – table 5
21.	Brownsville	Church Hall former Episcopalian Church of St Luke	33-37 Prince Edward Drive	Lot 18, DP 1023004	Local	5915	Being amalgamated with item above (5915) with same listing number
22. 2	Bulli	Rail Bridge-Bulli Colliery Rail Bridge and Alignment	Over Princes Highway; Near Hobart Street Junction	Rail Reserve	Local	5988	Merged with item number 6527 – Bulli Colliery Rail Bridge and Alignment (former) *
23.	Bulli	Former railway route* Bulli Colliery Rail Bridge and Alignment (Former)*	Bulli Colliery to rail bridge embankments	Lot 2, DP 1094964 Lot 50, DP 1045297; Lot 52, 53, DP 1201697	Local	6527	Amend name to reflect consolidated listing with Colliery Rail Bridge number 5988 - and update property description to capture alignment Also Heritage Map change – table 5
24.	Bulli	Norfolk Island Pines Beach Front Planting	Bulli Point, Point Street	Foreshore Lots 1-12, DP 7813; Lot 103, DP 7813 and Lot 1, DP 231244	Local	6191	Amend property description to capture extent of Pines Also Heritage Map change – table 5
25.	Bulli	Site of Captain Westmacott's Homestead "Sandon Cottage"*	Bulli Point (Sandon Point) Trg Station Sandon Point, Point Street	Lots 1-6 and 103, DP 7813 Part of Lot 1 DP 231244	Local	6358	Error in description of original listing site actually captures "Sandon Cottage"
26.	Bulli	Bulli General Cemetery*	Carrington Street	Lot 7309, DP 1144553	Local	6451	Also Heritage Map change – table 5 Add property description to LEP listing.
27.	Bulli	Houses Row of Federation Houses	81 87-101 Farrell Road	Lots 9-16, DP 6454	Local	6182	Minor Street address correction
28.	Bulli	Federation House	8 Fowler Road Street	Lot 2, DP 38367	Local	6180	Correct Street name and amend listing name
29.	Bulli	Victorian House	10 Fowler Road Street	Lot 1, DP 220111	Local	6181	Correct Street name and amend listing name
30.	Bulli	Bulli Railway Station	Franklin Avenue and Railway Street Lot 100	Rail reserve Lot 100, DP 1141139	Local, State	6484	Site subject to state listing, significance is amended accordingly

	Suburb	Item Name	Address	Property Description	Significance	Item No	Reason
31.	Bulli	Bulli Collieries— includes shaft No 1, shaft No 2 original shaft sinking head frame, old pit top, old furnace shaft and pit town remains*	Park Road Hobart Street	Lot 1, DP 430752; Lot 50, DP 1045297; Part Lot 23, DP 751301 and Lot 3, DP 255282; Lot 2374, DP 1120421; Lot 3 DP 1185534	Local	5924	and property description to match State Heritage Curtilage (SHR: 01829) Also Heritage Map change – table 5 Update property description to cover extent of Colliery
32.	Bulli	Federation House, Former Anglican Rectory	54 - 56 Park Road	Lot 1002, DP 873075	Local	6177	Minor Street address correction Also Heritage Map change – table 5
33.	Bulli	Memorial Obelisk	66 Park Road Lot 100 Park Road	Lot 801, DP 774190 Lot 100, DP 1141139	Local	6174 61081	Heritage Consultant advised Obelisk is a separate item to the adjacent St Augustine Anglican Church and Cemetery, a new separate listing to reflect this advice has been created. Also Heritage Map change – table 5
34.	Bulli	Bulli Station Master's Residence	41 Park Road	Lot 1, DP 809643	Local	6500	Add street number to match property description
35.	Bulli	Former Joint Stock Bank	203 233 Princes Highway	Lot 1, DP 799054	Local	5985	Update address to match property description
36.	Bulli	Victorian House	230 Princes Highway	Lot 162, DP 602341 Lot 2, DP 1130117	Local	6447	Update property description to match address and update listing name Also Heritage Map change – table 5
37.	Bulli	Former Bulli Shire Council Chambers	328-330 Princes Highway	Lot A, DP 421249	Local	6184	Update address to match property description
38.	Bulli	WWI Memorial	Princes Highway, (Slacks Flat Park)	Lot 2, DP 772593 Lot 33, DP 1182831	Local	6444	Update property description to match address
39.	Bulli	Former Bulli Railway Guesthouse	1 Railway Street 8 Station Street	Lot A, DP 159222 Lot 4 DP 1234087	Local	5987	Update property description due to Subdivision of Woolworths Site and amend address to match
40.	Cataraet	Site of former	Mt Ousley Road	Lot 30, DP 751301	Local	61064	Change to include only the eastern

Suburb	Item Name	Address	Property Description	Significance	Item No	Reason
Woonona	"Biddulph Farm"	Intersection with Rixons Pass Road				portion of Lot 30 DP 751301 as per recommendation of RMS Statement of Heritage Impact prepared by Artefact dated November 2016
Cleveland	Tramway alignment (former) (see also under suburb of Horsley)	Cleveland Road and Burringbar Street, running east-west along the southern boundary of lots	Lot 1, DP 220843; Lot 56, DP 751278	Local	61069	Update suburb Also Heritage Map change – table 5 Item is covered by listing under Horsley with same item number
Clifton	Cottage	6 Clifton School Parade	Lot 200, DP 1070345- Lot 5, DP 1175954	Local	6133	Add street number and amend property description to match Also Heritage Map change – table 5
Clifton	Former School Residence	30 Clifton School Parade	Lot 24, DP 1123807 Lot 216 DP 1252684	Local	6134	Add street address and amend property description to match Also Heritage Map change – table 5
Clifton	Cliff vegetation and Moranga Park	Lot 11 Lawrence Hargrave Drive	Lot 11, DP 1137408	Local	6347	Add street number to address
Clifton	Imperial Hotel	317 Lawrence Hargrave Drive	Lot 100, DP 118518	Local	6135	Add street number and amend property description to match
Coalcliff	Coalcliff Colliery shaft mine – including coke ovens *	280 Lawrence Hargrave Drive	Lot 58, DP 1097339; Lot 13, DP 1137408; Lot 1, DP 703488; Lot 11, DP 1132791	Local	6348	Add street number and amend property description to match
Coalcliff	Coalcliff Colliery jetty mine – including entrance portal*	East of Lawrence Hargrave Drive	Lot 7037, DP 1117499 and Crown land	Local	5922	Amend property description to reflect land holding
Coalcliff	Tunnel No 8*	Railway Tunnel, Illawarra Line	Lot 32, DP 881726 Lot 1, DP 1188960	Local	6258	Update property description to match address
Coledale	Coledale Railway Station	Coledale Railway Street	Rail reserve Lot 1, DP 1188983	Local	6350	Incorrect address, update property description to match Also Heritage Map change – table 5
Coledale	Norfolk Island Pines	South Coledale Beach, Lawrence Hargrave Drive	Reserve 88873; Lot 1, DP 519277; Lot 7024, DP 1060923; Lot 7302, DP	Local	6144	Amend property description capture extent of Pines

Suburb	Item Name	Address	Property Description	Significance	Item No	Reason
51. Coledale	Norfolk Island Pines	Beach-front Coledale Beach, Lawrence Hargrave Drive	1149797 Part Lot 11, DP 752054; Lot 1, DP 1204195 and Lot 1, DP 1168311	Local	6143	Amend property description to capture extent of Pines
52. Mount Saint Thomas	Fort Drummond	Television Avenue	Lots 1 and 3, DP 208194	Local	6405	Two listings for 6405, consolidated to one listing under Mount Saint Thomas
53. Corrimal	Ficus obliqua	Bloomfield Park, 10 Lydon Street	Lot 1, DP 214743; Lot 51, DP 12423; Lot 31, DP 1006012	Local	6465	Amend property description to capture extent of natural park area
54. Corrimal	"Mountain View"	14 Jones Place	Lot 126, DP 544292	Local	6201	Incorrect name of building listed on LEP
55. Corrimal	Former Headmaster's Residence—Corrimal Public School	96-98 Princes Highway	Lot 1, DP 835462	Local	6462	Amend address to match property description
56. Corrimal	Palm Court Corrimal Hotel	264-268 Princes Highway	Lot 101, DP 1004200	Local	6462 6464	Item number is incorrect and change to name to reflect current Hotel name
57. Corrimal	Ziem's Shops and Outbuildings	328-330 Princes Highway	Lot 104 & 105, DP 1062386	Local	6463	Update to correct address and update property description to match.
58. Corrimal	Catholic Cemetery*	116 Princes Highway	Lot 1, DP 1037746	Local	6360	Also Heritage Map change—table 5 Add Street number to match property description
59. Corrimal	Phil Adams Park	Railway and Duff Parade	Lot 4 Lot 14, DP 586795	Local	6209	Add name of Park to listing and correct property description
60. Corrimal	War Memorial	Corrimal Memorial Park, 92-96 Railway Street	Unknown Lot 1, DP 1140149	Local	6210	Add street address and add property description to match
61. Corrimal	Corrimal Public School	Wilga Street 100 Princes Highway	Lot 2, DP 835462	Local	6205	Update address to match property description
62. Dapto	Military Bunker—Mt Brown Reserve	Mt Brown Reserve, Bright Parade	Part Lot 4, DP 223746	Local	61016	Update listing name and add Mt Brown Reserve to address
63. Dapto	Bunya Pine	89 93 - 108 Princes Highway	Lot 1, DP 1050533	Local	61025	Update address to match property description Also Heritage Map change—table 5

Suburb	Item Name	Address	Property Description	Significance	Item No	Reason
64. Kembla Grange Dapto	Hoop Pines	Part Lot 223 Paynes Road	Part Lot 223, DP 751278	Local	6328	Update address and suburb to match property description Also Heritage Map change – table 5
65. Dapto	Dapto Hotel	102–110 Princes Highway	Lot 1, Section A, DP 564523	Local	61022	Update property description to match address
66. Dapto	Mt Brown reserve Landscape Area	Mt Brown Reserve	Lot 4, DP 223746; Lot 12, DP 233464; Lot 109, DP 1050302 and Lot 22, DP 774118 and Lots 31 DP 1175058, Lot 141 DP 2239830, Lot 52 DP 1233938, Lot 6, 7, 9, 10 & 11 DP 1147392, Lot 50 & 51 DP 1233938	Local	6339	Update Property description to cover Reserve Area and remove subdivided residential lots. Reserve also partially in the suburbs of Koonawarra and Yallah). Updated Lots and DP's to remove residential lots and capture correct extent. Also Heritage Map change – table 5
67. Dombarton	Railway Cutting— Unanderra/ Moss Vale railway line	Dombarton Lot 1 Reddalls Road	Lot 1, DP 185282	Local	6499	Add address to match property description. Also Heritage Map change – table 5
68. Dombarton	"Stream Hill" Homestead, barn, dairy and feed shed	231 Sheaffes Road	Lot 23, DP 790915	Local	6323	Add street number to match property description
69. Fairy Meadow	Balgownie Migrant Workers Hostel	Huts 201, 204 and 210, Cowper Street 9 Squires Way	Part Lot 1, DP 719865 Lot 2 DP 1172135	State	61075	Update to match address and property description
70. Fairy Meadow North Wollongong	Seaford House and Graduation Works	Puckey's Estate, Squires Way, North Beach	MSP 14349 Lot 9, DP 1163861	Local	61037	Update suburb and add correct address and property description for Puckey's Estate
71. Fairy Meadow Fernhill	House "Seacraft House"	457-459 Princes Highway	Lot 202, DP 804501	Local	6212	Incorrect suburb for address and update street number to match property description
72. Farmborough Heights	House "Non Such" / "Farmborough"	351 Farmborough Road	Lot 1, DP 628538	Local	6318	Add street number to match property description. Also Heritage Map change – table 5
73. Farmborough Heights	4 Cottages and gardens Cottages and Edna	End of 353 Farmborough Road	Lot 17, DP 255285	Local	6496	Name updated to reflect demolition of one cottage by NPWS and add

	Suburb	Item Name	Address	Property Description	Significance	Item No	Reason
	Kembla Heights	Walling Garden Precinct					street number to match property description and correct suburb. Also Heritage Map change – table 5
74.	Farmborough Heights Kembla Heights	Pit Pony Stables*	West end of 353 Farmborough Road	Lot 17, DP 255285	Local	6320	Add street number to match property description and correct suburb. Also Heritage Map change – table 5
75.	Figtree	Group of fig trees Fig Tree	Figtree Villas, 69 O'Briens Road.	Lot 124, DP 864159	Local	6293	Update name to reflect loss of some figs and add street numbers to match property description
76.	Figtree	"Greenhills" and "Hillside" and Gardens	170-190 Princes Highway	Lot 100, DP 1047547 Lots 104-111, DP 1132818	Local	6403	Add street number and update property description to match address.
77.	Helensburgh	Metropolitan Colliery*	Helensburgh Lot 7304 Parkes Street	MP Lease 25 Lot 7304, DP 1142152	Local	5921	Add street address to and update property description to match
78.	Helensburgh	Railway Tunnel (disused)*	Off Cawley Road	Lot 1, DP 248826 Lot 7, DP 1140314; Act No MP/Lease 35 and MP/Lease 41	Local	6345	Update property description to match mapping
79.	Helensburgh	Helensburgh Cemetery*	Cemetery Road	Lot 7068, Crown DP 93064	Local	6123	Add name to cemetery and update property description to match address.
80.	Helensburgh	School Residence	End of Fletcher Street	Part Lot 136, DP 752033	Local	6111	Update to correct property description
81.	Helensburgh	Cottage	12 Foster Street	Lot 294, DP 752033 Lot 100, DP 1129182	Local	6108	Original listing has been subdivided update to new property description. Also Heritage Map change – table 5
82.	Helensburgh	"Wildys"	16 Hay Street	Part Lot 4, Section 9, DP 758513 Lot 23, DP 933864	Local	6120	Update property description to match address
83.	Helensburgh	Helensburgh Primary School	Lukin Street	Part Lot 136, DP 752033	Local	6111	Add property description
84.	Helensburgh	Waterfall General (Garrawarra) Cemetery*	Princes Highway	Lot 4 and part of Lot 3, DP 840501 and part of Lot 1, DP 11604-Lot 7332, DP 1160404	Local	61028	Update incorrect property description

Suburb	Item Name	Address	Property Description	Significance	Item No	Reason
Helensburgh	Garrawarra Hospital including: gates and gatehouse, administration building, kitchen blocks, kitchen and store block, staff cafeteria, nurses hostel and residential houses	Old 9 Princes Highway	Lot 2, DP 840501 and Lot 4, DP 851304	Local	6486	Add street number to property address
Helensburgh	Helensburgh Park, Charles Harper Monument and Pines	Parkes Street 4 Walker Street	Crown Land Lot 7065, DP 1031042	Local	6124	Two items with same LEP number consolidated to cover Park and Monument and add correct property description
Helensburgh	Charles Harper monument and park	Parkes Street	Crown Land	Local	6124	Two items with same LEP number consolidated to cover Park and Monument
Helensburgh	House and associated land Interwar House and Land*	43-49 Princes Highway	Lot 713, DP 752033; Lot 911 DP 752033	Local	6505	Update property description to cover extent of site including land and amend item name
Helensburgh	Masonic Temple	1 - 1A Robertson Street	Lots 823 and 824, DP 752033	Local	6104	Add street number to address and update to match property description
Helensburgh	Sri Venkateswara Temple	1 Temple Road	Lot 15, DP 255197	Local	6122	Add street number to address and update to match property description
Helensburgh	Helensburgh Railway station	Tunnel Road Lot 9 Wilsons Creek Road	Rail reserve Lot 9, DP 1129965	State	6343	Add identifying suburb to name and add property description. Also Heritage Map change – table 5
Helensburgh	Railway Tunnel (disused), railway platform, railway tunnels*	Corner Tunnel Road and Old Station Road	Rail reserve and Lot 10, DP 1129965, Lot 7310 Crown DP 1152384, Lot 1, DP 248826; Lot 1, DP 815356; and Lot 100, DP 839934	Local	6482	Update property description to match mapping
Helensburgh	Railway Cottage	Corner Tunnel Road and Vera Street 3 Vera Street	Lot 1, DP 816623	Local	6107	Update address to match property description
Helensburgh	Helensburgh Railway Station Platform*	End of Tunnel Road	Lot 1, DP 248826	Local	6482	Update property description to match mapping

Suburb	Item Name	Address	Property Description	Significance	Item No	Reason
Horsley	Former Tramway alignment (former) (see also under suburb of Cleveland)	Bong Bong Road Lot 834 Wholahan Avenue and Public Reserve 44 Mallion Avenue	Lot 601, DP 1054648, Lot 62, DP 751278 Lot 228 DP 1165205 and Lot 834 DP 1172488	Local	61069	Update address to match two Council reserves and remove private owners in Subdivision. Update property description to match address. Add asterisk to note that this is an archaeological site. Also Heritage Map change – table 5
Huntley	Huntley Colliery*	Off Avondale Colliery Road Lot 101 Avondale Road	Lots 26 and 27, DP 3083 Lot 101 DP 1247603	Local	7102	Update address and property description to match mapping
Huntley	Trees (former site of "Benares")*	410 Cleveland Road	Lot 101, DP 856793	Local	5979	Add asterisk to note that this is an Archaeological site Also Heritage Map change – table 5
Huntley	Sunnyside Farm and Outbuildings*	Lot 1 Bong Bong Road Huntley	Lot 1 DP 810104	Local	61080	Add asterisk to note that this is an archaeological site
Huntley	Site of Former "Waples" Butchery*	Lot 1 Bong Bong Road Huntley	Lot 1 DP 810104	Local	61079	Add asterisk to note that this is an archaeological site Also Heritage Map change – table 5
Huntley	Site of Former Swan Homestead*	Lot 1 Bong Bong Road Huntley	Lot 1 DP 810104	Local	61082	Add asterisk to note that this is an archaeological site
Kanahooka	Smelter Rail Route*	Former alignment behind properties fronting Thirroul Road, Edgeworth Street Avenue and William Beach Road extending between Kanahooka Road, Field Street and Webb Park	Lots 1 and 3, DP 546902	Local	61044	Update incorrect street name
Kanahooka	Former Dapto Smelter*	Kanahooka Road	Lot 415 DP 1060164, Lots 10-33, 40-47, 49-53, 55, 57, 59-77, 79-101 DP 1159882, Lots 240-241 DP 1185005, Lot 1-2 DP 1203820, Lots 3-4 DP 1203823, Lots 5-6 DP	Local	5953	Add affected property Descriptions to reflect Brooks Reach Subdivision

Suburb	Item Name	Address	Property Description	Significance	Item No	Reason
			1203822, Lots 7-8 DP 1203821, Lots 9-10 DP 1203824, Lots 11-12 DP 1203826, Lots 1-2 DP 1220152, Lots 1-2 DP 1218433, Lots 1-2 1203058			
103. Keiraville	Significant Trees in Reserve	Gipps Road Reserve, Shoobert Crescent Public-reserve-between Gipps-Road-and Shoobert-Crescent	Lot 165, DP 203864	Local	6513	Simplify Address
104. Keiraville	"Gleniffer Brae" and surrounding Sorenson Garden	Wollongong Botanic Garden, Off Murphy's Avenue 48 Murphys Avenue	Lot 3 DP 252694, Lot 1 DP 252694 and Lot 2 DP 252694	State	5940	Update property description to align with State Heritage Listing and add correct address as recommended in Gleniffer Brae CMP (Architectural Projects, 2019)
105. Kembla Grange	Former "Barlyn" homestead site, including gardens and dairy*	105 Darkes Road	Lot B, DP 161785 Lot 202, DP 1192033	Local	6325	Add street number to address and update to match property description
106. Kembla Grange	Newton Park and Gardens	451 Princes Highway, (next to Kembla Grange racecourse)	Lot 12, DP 829115 1238073	Local	5949	Add street number to address and update property description to reflect 2016 subdivision
107. Kembla Grange	Settlers' Cemetery and World War II cemetery	47 Reddalls Road	Lot 7002, DP 1055632, Lot 114, DP 771098	Local	5989	Incorrect item name and amend property description to cover whole Cemetery and update address to match
108. Kembla Grange	Slab Hut	303 Reddalls Road and adjoining road reserve	Lot 103, DP 840320 and Road reserve	Local	6433	Update property description to include road reserve.
109. Kembla Grange	"Glen Ayre" Homestead	167 Sheaffes Road	Lot 1, DP 71431	Local	6322	Also Heritage Map change – table 5 Add street number to address
110. Kembla Grange	"Stane Dyke" Homestead and Outbuildings	Sheaffes Road 17 Stane Dyke Road	Lot 1, DP 986796 Lot 1000 DP 1239565	Local	5976	Add name of Homestead to LEP and update property description to reflect subdivision.

Suburb	Item Name	Address	Property Description	Significance	Item No	Reason
111. Kembla Grange	West Dapto Public School and Residence (former)	150 Sheaffes Road	Lot 1, DP 795173	Local	5975	Also Heritage Map change – table 5 Add street number to address
112. Kembla Grange	Settler's Cemetery	West Dapto Road Reddalls Road	Lot 113, DP 771098	Local	6327	Update name to match correct Cemetery and update address to match property description
113. Kembla Grange	Kembla Grange Racecourse Railway Station	Corner of West Dapto Road and Princes Highway (on South Coast Rail Line)	Lot 44, DP 1189256	Local	61061	Add property description to match listed address
114. Kembla Heights	Site of Pioneer Kerosene Works*	Between American Creek and Cordeaux Road	Part Lot 4, DP 751278 Lot 1 & 3, DP 1103781	Local	6411	Inaccurate area mapped due to uncertain location. Update property address and description to match updated mapping. Also Heritage Map change – table 5
115. Kembla Heights	Windy Gully Cemetery*	Lot 3 Cordeaux Road, Windy Gully	Lot 172, DP 751278 Lot 3 DP 1103781	Local	5941	Update property description to match updated address and add item name. Also Heritage Map change – table 5
116. Kembla Heights	Row of Miners' Cottages and Club Room	135 Cordeaux Road, Windy Gully	Lot 1, DP 551243	Local	5942	Add Street number to match property description
117. Kembla Heights	Former Post Office	Lot 3 Harry Graham Drive	Part Lot 160, DP 751278 Part of Lot 3, DP 1103666	Local	5946	Add address to LEP and update property description to match. Also Heritage Map change – table 5
118. Kembla Heights	House	Lot 1 Harry Graham Drive	Lot 1, DP 986723; Lot 21, DP 1190749 and Lot 161, DP 1196124	Local	6410	Update property description to match address
119. Kembla Heights	Mt Kembla Colliery – including site of mine workings, portal, mine air shaft and pit pony stables*	Lot 1 Harry Graham Drive	Lot 2, DP 606150 Lots 1 & 2, DP 1103666; Lot 21, DP 1190749 and Lot 22, DP 1076092	Local	7105	Update address to match property description which covers whole Colliery site
120. Kembla	Nebo Colliery*	Lot 1-3 Harry Graham	Lot 1, DP 1103666; Lot 1, DP	Local	7104	Update address to match property

Suburb	Item Name	Address	Property Description	Significance	Item No	Reason
Heights		Drive	1103781 and Lot 3, DP 1103666			description which covers whole Colliery site
121. Kembra Heights	Mine Manager's Residence	East of Lot 1 Harry Graham Drive	Part Lot 74, DP 751278 Lot 1, DP 1103666	Local	5947	Update address to match property description
122. Lake Heights	Fig Tree	8-10 6-8 Grandview Parade	Lots 260 and 261 and 262, DP 15174	Local	61013	Update address to match property description and update property description to match mapping
123. Lilyvale	Shacks and cabins Royal National Park Coastal Cabin Communities	Burning Palms, Royal National Park	Lot 1, DP 56059 Lot 101, DP 1193169	Local State	6483	Update significance and amend listing name and property description to match State Heritage Listing (SHR: 01878). Also Heritage Map change – table 5
124. Lilyvale	Shacks and cabins Royal National Park Coastal Cabin Communities	Era Beach, Royal National Park	Lot 2, DP 63741 Lot 101, DP 1193169	Local State	6483	Update significance and amend listing name and property description to match State Heritage Listing (SHR: 01878). Also Heritage Map change – table 5
125. Lilyvale	Shacks and cabins Royal National Park Coastal Cabin Communities	Little Garie Beach, Royal National Park	Lot 1, DP 752018, Mineral Leases 2 and 3, DP 752018 Lots 13 & 44, DP 752018	Local State	6483	Update significance and amend listing name and property description to match State Heritage Listing (SHR: 01878). Also Heritage Map change – table 5
126. Mangerton	Mangerton Park	19 25 Eastern Avenue to end of Eirene Street Avenue.	Lot 2, DP 512389; Lot 226, DP 24688; and Lot 42, DP 27316; Lot 43, DP 27316 and Lot 5, DP 229828	Local	6280	Incorrect Address – update property description to match correct address
127. Mangerton Coniston	Stand of Spotted Gum	Behind public reserve off Milne Crescent Lot 4 Robertson street, Coniston	Lot 4, DP 838267	Local	6404	Incorrect suburb and address update to match property description
128. Mangerton Mount Saint Thomas	Fort Drummond including Stand of Spotted Gum	Mt Drummond, WIN TV and RAAF Site 1 Television Avenue, Mt Drummond	Lots 1 and 3, DP 208194	Local	6405	Consolidated two items under same item number 6405 to one listing. Update address to match property description
129. Mount Saint	Fort Drummond	Television Avenue	Lots 1 and 3, DP 208194	Local	6405	Consolidated to one listing above

	Suburb	Item Name	Address	Property Description	Significance	Item No	Reason
	Thomas						
130.	Mangerton	Streetscape of Mature Blackbutts and Turpentine	Area around Reservoir Street, Norman Street, Mearns Avenue and Eileen Street Eirene Avenue	Road reserve and Lot 14, DP 213805; Lot 1, DP 310077; Lot 2, DP 617042 and Lot 1, DP 120714	Local	6469	Incorrect street name listed, update property description to match address
131.	Marshall Mount	Marshall Mount Progress Association Hall	450 Marshall Road	Lot 1, DP 396100 and Lot 12 DP 790746	Local	61027	Update property description to match LEP mapping
132.	Mt Kembla	Post Office/Store	314 Cordeaux Road	Lot 20, DP 855333 Lot 1 & 3, DP 1216466	Local	5945	Update property description to match address. Also Heritage Map change – table 5
133.	Mt Kembla	Mt Kembla School and Headmaster's Residence	323–327 Cordeaux Road	Lot 4, DP 126784 Lots 1–4, DP 126784	Local	5943	Update property description to match address
134.	Mt Kembla	Mt Kembla Hotel	274 Cordeaux Road	Lot 100, DP 717507	Local	5948	Add street number to address to match property description
135.	Mt Keira	Mt Keira Demonstration School	255 Mt Keira Road	Lots 1 and 2, DP 308171; Lot 1, DP 782592 and Lot 2, DP 782592	Local	5903	Update property description to match address
136.	Mt Keira	Kemira Colliery*	Mt Keira Road	Part Lot 31 and Part Lot 32, DP 751299 Lot 1, DP 852788; Lot 32, DP 1191463; Lot 310, DP 1080848; Lot 3100, DP 1137780 and Lot 6, DP 255281	Local	7101	Update property description to cover curtilage of Colliery
137.	Mt Ousley	Modernist House	31 Burling Avenue	Lot 22, DP 20427 and Lot B, DP 415350	Local	6217	Update property description to match address and amend listing name
138.	North Wollongong	North Wollongong Hotel (formerly Bode's Hotel) and Group of Trees	3 Flinders Street	Lot 1, DP 654485	Local	6273	Merged with Group of Trees with same item number at rear of site
139.	North	Group of trees	3 Flinders Street (rear of)	Lot 1, DP 654485	Local	6273	Consolidated with item above with

	Suburb	Item Name	Address	Property Description	Significance	Item No	Reason
	Wollongong		North Wollongong Hotel				same listing number
140.	North Wollongong Gwynneville	Weatherboard House	31 Foley Street, North Wollongong	Lot 12, DP 614895	Local	6245	Incorrect Suburb update to match address
141.	North Wollongong	North Beach Surf Club	Stuart Park, George Hanley Drive	Lot 2, DP 228880 Lot 3, DP 1136814	Local	61035	Update property description to match address
142.	North Wollongong	Group of Norfolk Island Pines and Canary Island Palms	Stuart Park, George Hanley Drive	Lot 2, DP 228880 Lot 3, DP 1136814	Local	6283	Add correct street address and Update property description to match address
143.	Otford	Shacks and cabins Royal National Park Coastal Cabin Communities	Bulgo Beach, Lady Wakehurst Drive, Royal National Park	Lot 2, DP 63741 Lot 1, DP 56059 and Lot 21 Crown DP 1193149	Local State	6483	Update significance and amend listing name and property description to match State Heritage Listing (SHR: 01878)
144.	Otford	Semi-detached Houses	4-7 1,3,5 & 7 Lady Carrington Road	Lots 4-7, DP 817562	Local	6125	Update address to match property description
145.	Otford	Former station masters house Former railway cottage	40 Lady Carrington Road	Lot 2, DP 817561	Local	61029	Incorrect item description was swapped with item below
146.	Otford	Former railway cottage Former station masters house	42 Lady Carrington Road	Lot 1, DP 817561	Local	61001	Incorrect item description
147.	Otford	Former Headmaster's Residence	35 Station Road	Lot 1, DP 1119060 Lot 1 and 2, DP 1193918	Local	6126	Update property description to match address
148.	Otford	Otford Tunnel* and Old Railway Alignment	Between Stanwell Park/Otford on disused railway line	Lot 1, DP 668532 DP 752018	State	6131	Update property description to match existing mapping and update listing name
149.	Port Kembla	Battery Observation Post	15 25-29 Gallipoli Street	Lot 2, DP 1008216 Lot 15, DP 1138179	Local	6594	Incorrect address, update property description to match correct address
150.	Port Kembla	Remains of Original Ocean Baths*	MM Beach, Gloucester Boulevard	Lot 7008, Crown DP 1059827	Local	6477	Add name of location and update property description
151.	Port Kembla	Hill 60*, Fisherman's Beach, Boilers Point, Red Point and MM Beach*	Hill 60, Fisherman's Beach, Boilers Point and MM Beach	Lot 3, DP 86079; Lots 1 and 3, DP 531524; Lots 1 and 2, DP 614555; Reserve 71700 and 73221; Lot 1, DP	State	61043	Consolidated several Hill 60 listings (6302, 6417, 6117) and update property description to cover whole extend of site covered by Hill 60

Suburb	Item Name	Address	Property Description	Significance	Item No	Reason
			614555; Lot 1, DP 152538 and Lots 7008-7010 and 7048-7050; DP 1052504; Lot 7048, DP 1052504; Lot 7050, DP 1061649; Lot 7009, DP 1059827; Lot 7049, DP 1061648; Lot 7008, DP 1059827, Lots 1 & 2 DP 706046, Lot 2 DP 614555, Lot 90 DP 200729			Conservation Management Plan
152.	Port Kembla Saint Kliment Ohridski, Macedonian Orthodox Church	58-60 60-62 Keira Street	Lots 8 and 9, Section 3, DP 8703	Local	61012	Update address to match property description
153.	Port Kembla Former Fire Station	99 Military Road	Lots 13 and 14, Section 3, DP 5868 Lot 1, DP 1224353	Local	6307	Update property description to match address
154.	Port Kembla St Stephen's Anglican Church of Australia, including Rectory and Hall	111 Military Road	Lots 34, 35 and 36, DP 7804	Local	6305	Update property description to match address. Also Heritage Map change – table 5
155.	Port Kembla House and Shop	123 Military Road	Lot 28, Section 4, DP 7804	Local	6311	Add street number to match property description. Also Heritage Map change – table 5
156.	Port Kembla Site of Port Kembla Primary School*	Military Road	Lot 1, DP 811699	Local	6304	Update item description to reflect demolition of site following fire
157.	Port Kembla Red Point/Hill 60 landscape*	Off Military Road	Lot 3, DP 86070; Lot 1, DP 531524; Lot 1, DP 614555 and Reserve 73221; Lot 2, DP 614555 and Lot 3, DP 531524	State	6417	Consolidate duplicated listing to Hill 60 listing number 61043
158.	Port Kembla Gun emplacement, tunnels and isolated concrete bunkers*	Hill 60, Boilers Point	Lot 1, DP 531524; Lot 1, DP 614555 and Lot 2, DP 614555	State	6417	Consolidate duplicated listing to Hill 60 listing number 61043
159.	Port Kembla Port Kembla Olympic Pool	Olympic Boulevard	Lot 2, DP 345786 and Lot 51, DP 1047304	Local	6431	Address spelt incorrectly add extra lot to cover whole Pool site. Also Heritage Map change – table 5

	Suburb	Item Name	Address	Property Description	Significance	Item No	Reason
160.	Port Kembla	Coomaditchie Lagoon and surrounds*	Parkes-Street Cowper Street	Lot 1, DP 182391	Local	6424	Update name as per correct spelling. Update address to match property description. Also Heritage Map change – table 5
161.	Port Kembla	Former Commonwealth Bank	31–33 Wentworth Street	Lot 3, Section 6, DP 5868	Local	6308	Update item description to match current building use
162.	Port Kembla	"Guinery's", Port Kembla Hotel	54–58 Wentworth Street	Lots 31 and 32, Section 2, DP 5868	Local	6421	Update property description to match address. Also Heritage Map change – table 5
163.	Primbee	Fig Tree	Reserve corner James Avenue and Korungulla Avenue Crescent, Primbee (Ray Crump Oval)	Lots 159 and 160, DP 9753	Local	61014	Update incorrect street name
164.	Russell Vale Corral	South Bulli Colliery*	Broker-Street Lot 1 and 7 Princes Highway	Lot 31, DP 1006012 Lot 1, DP 1046070; Lots 1, 2 & 3, DP 1052074; Lot 1, DP 77407; Lot 1, DP 534522; Lot 1, DP 976144; Lot 1, DP 986676; Lot 1, DP 652833; Lot 1, DP 1022945 and Lots 1 & 2, DP 5323	Local	5928	Incorrect address and suburb update to match curtilage of Colliery and update property description to match address
165.	Russell Vale	Moreton Bay Fig	Russell Vale Golf Course, 618 Princes Highway	Lot 855, DP 1105102	Local	6211	Add Street address of golf course to match property description. Also Heritage Map change – table 5
166.	Russell Vale	Hills Figs Fig Trees	50 Terania Street	Road reserve and Lot 25 DP 23149	Local	6202	Update item description to reflect two species of Figs present and add street number to address and update property description to match. Also Heritage Map change – table 5
167.	Scarborough	Scarborough Primary School	371–381 Lawrence Hargrave Drive	Lots 18-29, Section 2, DP 2281	Local	6137	Update property description to match address
168.	Scarborough	Row of Miners' Cottages	438, 440, 442, 443, 444, 445, 449, 453 and 453A Lawrence Hargrave	Lot 23, DP 740434; Lot 24, DP 740434; Lot 25, DP 740434; Lot 26, DP 740434;	Local	6351	Update Address to match property description

	Suburb	Item Name	Address	Property Description	Significance	Item No	Reason
			Drive.	Lot 7, Section B, DP 2693; Lot B, DP 431274; Lot C, DP 431274; Lot 90, DP 835584 and Lot 91, DP 835584			
169.	Scarborough	Scarborough Railway Station	Scarborough Lot 1 Railway Avenue	Rail reserve Lot 1, DP 811416	State	6349	Add street address and update property description to match. Also Heritage Map change – table 5
170.	Stanwell Park	Otford Tunnel and Old Railway Alignment*	Chellow Dene Drive Avenue	Lot 1, DP 668532 Lot 5 DP 1191773, Lot 216 DP 822230, Lot 35 DP 245198, Lot 451 DP 1129219, Lot 90 DP 1091722 and Chellow Dene Avenue Road Reserve.	Local	6131	Update property description to match existing mapping and add Road Reserve
171.	Stanwell Park	"Interbane"	26 8 Lawrence Hargrave Drive	Lot 100, DP 1012889	Local	6346	Update address to match property description
172.	Stanwell Park Stanwell Tops	Lawrence Hargrave Memorial Park	Bald Hill Lookout, Otford Drive Road	Lot 237, DP 5858 Lot 243, DP 658560; Lot 244, DP 658561; Lot 245, DP 658562; Lot 246, DP 658563; Lot 247, DP 658564; Lot 248, DP 658565; Lots 237 & 238, DP 1155156; Lots 239 & 240, DP 11555165; Lot 1, DP 1180011; Lot 4, DP 1191773; Lots 230-236, DP 5858; Lot 1, DP 118841, Lot 1, DP 118842 and Lot 1, DP 309491	Local	5918	Incorrect street name and suburb and update property description to cover curtilage of park. Also Heritage Map change – table 5
173.	Stanwell Park	"Hillcrest"	1A Railway Crescent	Part Lot 58, DP 752054 Lot 5800, DP 1132696	Local	5901	Add street number to listing and update property description to match
174.	Stanwell Park	Railway Viaduct*	Stanwell Creek Gorge	Rail reserve Lot 11, DP 1132791	State	5920	Add correct property description
175.	Stanwell Tops	Former Garden of Peace	Corner Longview Crescent and	Lot 1, DP 213038	Local	61002	Update address to match property description

Suburb	Item Name	Address	Property Description	Significance	Item No	Reason
		Stonehaven Road 31				
176.	Tarrawanna	Stonehaven Road	Lot 2, DP 793302	Local	6480	Add street number to address
177.	Tarrawanna Fernhill	Lot 2 Hawthorn Street Douglas Road, Wallace Road and Ross Street	Lot 38, DP 35954	Local	6221	Incorrect suburb
178.	Thirroul	Thirroul Baths Precinct	Part Lot 405, DP 8811119; Lots 30 - 33, Section 3, DP 2185 and Lot 1, DP 964636	Local	61030	Update address and update property description to cover whole precinct. Also Heritage Map change – table 5
179.	Thirroul	Massandra and Ballinderry	Lots 1 and 2, DP 618432 Lot 2, DP 618432 and Lots 11 & 12, DP 1187593	Local	6353	Include second house in item description and update property description to match address
180.	Thirroul	Fig Tree (Ficus obliqua)	Lot 27, DP 1062555 Lot 1, DP 1141284; Lot 2, DP 855965 and Lot 3, DP 855965	Local	6492	Update address and update property description to match
181.	Thirroul	Fig Tree	Part Lot 20 and Part Lot 21, DP 13365 Lots 202 and 203, DP 1158352	Local	61005	Add street number to address and update property description to match
182.	Thirroul	Former Kings Theatre	Lot 100, DP 1104635 Lot 101, DP 1126857	Local	6155	Update property description to match address
183.	Thirroul	War Memorial WWI (adjacent to former RSL club)	Part Lot 4, DP 664367 Lot 107 DP 1156609	Local	6162	Update property description to match address
184.	Thirroul	Small Leafed Fig	Lot 3, DP 984203; Lot 5, DP 984203 and Lot 1, DP 1221078	Local	6172	Add street numbers to address and update property description to match
185.	Thirroul	Old Railway Barracks	Rail reserve Lot 1, DP 1187295	Local	6498	Correct address and update property description to match. Also Heritage Map change – table 5
186.	Thirroul	Thirroul Railway Station	Rail reserve Lot 107, DP 1156609	State	6352	Add correct property description. Also Heritage Map change – table 5
187.	Thirroul	Row of Federation Houses	Lot 301, DP 1041575	Local	6167	Update listing name
188.	Thirroul	Thirroul Beach Reserve	Part Lot 405, DP 8811119;	Local	6171	Correct address and update property

	Suburb	Item Name	Address	Property Description	Significance	Item No	Reason
189.	Unanderra	House "Nudjia"	Parade 83A Cummins Street	Lots 30 - 33, Section 3, DP 2185 and Lot 1, DP 964636 Lot 23, DP 245683 Lot 2, DP 1135561	Local	6426	Update address to reflect subdivision and update property description to match. Also Heritage Map change – table 5
190.	Unanderra	Former Unanderra Council Chambers and Hall	Corner Princes Highway and Factory Street 144 Princes Highway	Lot 1, DP 860110	Local	6317	Update address to match property description and correct name
191.	Unanderra	Old Unanderra Public School, formerly Charcoal Public School	136 Princes Highway Corner Princes Highway and Victoria Street	Part Lot 2, DP 795162 Lot 100, DP 1186122	Local	6427	Add correct street address and update property description to match address. Also Heritage Map change – table 5
192.	Unanderra	Unanderra Station Master's Residence	Lot 1000 Princes Highway Unanderra Railway Line	Rail reserve Lot 1000, DP 1141456	Local	6428	Add correct property description and update address to match
193.	West Wollongong	Former Roger Therry residence "Keera Vale"	30 Bukari Street	Lot 1, DP 206947	Local	5912	Add name of house to property description
194.	West Wollongong	Moreton Bay Fig	55-59 Princes Highway	Lot 1, DP 839750	Local	6292	Update address to match property description
195.	West Wollongong	Former Mt Keira Inn*	55-59 Princes Highway	Lot 1, DP 839750	Local	6408	Update address to match property description
196.	Windang	Norfolk Island Pines	Shellharbour Road Perkins Beach, Fern Street	Road reserve Lot 7015, DP 1029497	Local	6312	Add correct address and update property description to match
197.	Wollongong	Former cemetery* Pioneer Rest Park*	Bank Street Kembla Street – Pioneer Rest Park	Unknown Lot 7045, DP 1126831	Local	61038	Add property description and update address to match
198.	Wollongong	Crane Pedestal	Belmore Basin – Wollongong Harbour Endeavour Drive	Wollongong Harbour Lot 1 DP 633814	Local	6399	Add property description and update address to match
199.	Wollongong	Wollongong Town Hall and Former Council Chambers (now Art Gallery)	Burrelli Street (Corner of Kembla Street) 93 Crown Street and 46 Burrelli Street	Lots 1–7, DP 124277, Lot 1, DP 1103977, Lot 1, DP 1108973, Lots 1–6, DP 1131686 and Lot 1, DP	Local	6381	Add correct street address and update property description to match

Suburb	Item Name	Address	Property Description	Significance	Item No	Reason
Wollongong	Victorian House	71A-75 Campbell Street	949697 Lots 1-5, DP 1131686 and Lot 1, DP 1161730 Lot 2 Lot 12, DP 884323	Local	6230	Add correct street number and update property description to match address and update listing name to match Statement of Significance
Wollongong	Wollongong Primary School and Headmaster's Residence	67A Church Street	Lots 1-7, DP 781988; Lot 1, DP 61915 and Lots 1 and 2, DP 307856	Local	5935	Consolidated with other item with same item number. Also Heritage Map change – table 5
Wollongong	Former Allowrie Terrace	69-71 Church Street	Lot 1, DP 126603 and Lot A, DP 163539	Local	6389	Incorrect spelling of item name
Wollongong	St Michael's Anglican Church of Australia including church hall and rectory and Significant Trees	74 Church Street	Lot 102, DP 1101956	State	5905	Update item description to include trees on grounds and consolidate with item below with same listing number
Wollongong	St-Michael's-Anglican Church-of-Australia trees-in-ground (excluding-those-west-of-old-rectory)	74 Church Street	Lot 102, DP 1101956	Local	5905	Consolidated with above with same item number
Wollongong	Canary Island Date Palms	84 Church Street—MacCabe Park	Part Lot 12, DP 524803 and Lot 1, DP 227811	Local	6587	Add street number to address to match property description
Wollongong	Memorial arch	Church Street—MacCabe Park	Part Lot 12, DP 524803	Local	6324	Consolidated with item below with same listing number
Wollongong	Wollongong War Memorial and Frank Andrews Monument	84 Church Street—MacCabe Park	Part Lot 12, DP 524803	Local	6324	Add street number to address to match property description and update item description to include both the War Memorial and Monument. Add correct name to monument as per Resolution of Council 07 May 2005
Wollongong	Smiths Hill Fort	Battery Park, Cliff Road	Lot 69 and Lot 70, DP	Local State	5934	Add correct address and property

Suburb	Item Name	Address	Property Description	Significance	Item No	Reason
			751299			description and reflect state heritage listing (SHR: 01823).
Wollongong	Remains of Mt Keira Osborne Wallsend Tramway Bridge	Cliff Road—Osborne Park	Lot 1, DP 62257 Lot 12, DP 212648	Local State	6367	Also Heritage Map change—table 5
Wollongong	Railway Cuttings and Embankments	Cliff Road—Wollongong Foreshore from North Beach to Belmore Basin	Lot 70, DP 751299	Local State	6306	Update property description to match address and reflect state heritage listing (SHR: 01823)
Wollongong	House Alice Villa	117 Corrimal Street	Lot 101, DP 827740	Local	6234	Reflect state heritage listing (SHR: 01737)
Wollongong	Gravestones	9-11 Crown Street—Andrew Lysaght Park	Lots 1-5 and 7, DP 1091530	Local	6383	Add house name
Wollongong	Monument	9-11 Crown Street—Andrew Lysaght Park	Lots 1-5 and 7, DP 1091530	Local	6383	Consolidated with item below with same listing number
Wollongong	Former Roman Catholic cemetery including gravestones and monument*	9-11 Crown Street—Andrew Lysaght Park	Lots 1-5 and 7, DP 1091530 Lots 1-7, DP 1091530 and Lot 143, DP 786508	Local	6383	Consolidated with item below with same listing number
Wollongong	Norfolk Island Pine	93 Crown Street	Lot 7, DP 124277 Lot 1, DP 1161730	Local	6285	Update property description to match address
Wollongong	Shop	151-149-161 Crown Street (part)	Lot 1, DP 53763 Lot 1, DP 1094311	Local	6232	Update address and amend property description to match address
Wollongong	Former Marcus Clark Building	281-291 Crown Street	Lot 1, DP 927806; Lot 1, DP 1087986; Lot 1, DP 82673; and Lot 1, DP 117019 and Lot 1, DP 1198873	Local	6474	Update property description to match address
Wollongong	City Pacific International (former Crown Hotel) Former Crown Hotel	309 Crown Street	Lot 1, DP 807229	Local	6241	Update item description to simplify
Wollongong	Tattersall's Hotel	329-333 Crown Street	Lot 1, DP 807229 DP 222491	Local	6242	Add correct street number and update property description to match
Wollongong	Group of Fig Trees	348-352 Crown Street	Lot 95, Section 3, DP 1258	Local	5939	Update property description to

Suburb	Item Name	Address	Property Description	Significance	Item No	Reason
		(grounds of Wollongong Hospital)	Lot 200, DP 1206575			match address
Wollongong	Wollongong Hospital Nurses' Home	348-352 Crown Street (Wollongong Hospital Site)	Lot 95, Section 3, DP 1258 Lot 200, DP 1206575	State	5939	Update property description to match address
Wollongong	Moreton Bay Fig	363-373 Crown Street (adjacent to Masonic Club)	Lot 1, DP 201949 and Lot 100, DP 1214547	Local	6290	Add correct street number and update property description to match
Wollongong	Moreton Bay Fig	Beatson Park, Crown Street	Lot 12, DP 5507 Lots 1 & 2, DP 1115021	Local	6286	Update property description to match address
Wollongong	House "Hillside"	12 Edward Street	Lot 7, DP 15904	Local	6372	Add name of house to item description
Wollongong	Site of Cokeworks, including remains of coke oven*	Endeavour Drive - Belmore Basin	Part Lot 1, DP 633814	Local State	6406	Reflect state heritage listing (SHR: 01823)
Wollongong	Stone Steps	Endeavour Drive—Belmore Basin—connecting Endeavour Drive to Wharf Area	Lot 1, DP 739591 and Part Lot 1, DP 633814	Local State	6364	Reflect state heritage listing (SHR: 01823). Also Heritage Map change – table 5
Wollongong	Harbour Steps	Endeavour Drive—Belmore Basin—north-eastern side	Lot 1, DP 739591 and Part Lot 1, DP 633814	Local State	6418	Reflect state heritage listing (SHR: 01823)
Wollongong	Breakwater Light House	Endeavour Drive—End of Breakwater, Wollongong Harbour	Part Lot 1, DP 633814	Local State	5906	Reflect state heritage listing (SHR: 01823)
Wollongong	Flagstaff Hill Fort	Endeavour Drive—Flagstaff Hill	Lots 1 and 2, DP 222318	Local State	5933	Reflect state heritage listing (SHR: 01823)
Wollongong	Wollongong Head Lighthouse	Endeavour Drive—Flagstaff Hill	Lots 1 and 2, DP 222318	Local State	6375	Reflect state heritage listing (SHR: 01823)
Wollongong	Three Guns	Endeavour Drive—Flagstaff Hill	Lot 7024, DP 1072640; Lots 7039-7042, DP 1066112 and Lot 7046, DP 1066112, MSP 2623 Lot 7041, DP 1066112	Local State	6376	Reflect state heritage listing (SHR: 01823)
Wollongong	Seawall*	Endeavour Drive,	Lot 7024, DP 1072640; Lots 7039-7042, DP 1066112	Local State	6344	Reflect state heritage listing (SHR: 01823)

Suburb	Item Name	Address	Property Description	Significance	Item No	Reason
		Flagstaff Point	7039-7042, DP 1066112 and Lot 7046, DP 1066113 MSP 2623 Lot 7040, DP 1066112			01823)
233. Wollongong	Ladies' Baths	Endeavour Drive, south of Flagstaff Point	Lot 7024, DP 1072640; Lots 7039-7042, DP 1066112 and Lot 7046, DP 1066113, MSP 2623	Local State	6373	Reflect state heritage listing (SHR: 01823)
234. Wollongong	Nuns' Baths	Endeavour Drive, south of Pulpit Rock	Lot 7023, DP 1072640, MSP 2623	Local State	6289	Reflect state heritage listing (SHR: 01823)
235. Wollongong	House (former coach house) Former Coach House	10A-10B Flinders Street	Lot 101 and 102 DP 579564	Local	6274	Add correct street number to address and update property description to match and amend listing name. Also Heritage Map change – table 5
236. Wollongong	Old Wollongong Court House	1 Harbour Street (Corner of Cliff Road)	Lot 1, DP 47921	Local State	5908	Reflect state heritage listing (SHR: 01823)
237. Wollongong	Interwar House	32 Harbour Street	Lot 2, Section 1, DP 152385	Local	6593	Update property description to match address and amend listing name
238. Wollongong	St Mary's Convent and secondary girls' school and chapel	15 Harbour Street	Lot 100, DP 861791	Local	6248	Add Street number to match property description
239. Wollongong	Victorian House	125-129 Keira Street	Lot B, DP 65920	Local	6253	Add correct street number to address to match property description
240. Wollongong	Group of Interwar Shops	131-147 Keira Street	Lots 1 and 2, DP 152849, and Lot 22; DP 538099 and Lot C DP 65920	Local	6255	Amend property description to match address and amend listing name
241. Wollongong	Regent Theatre	197-199 Keira Street	Lot 1, DP 330961 and Lot 18, DP 6323	State	5937	Add correct street number to address to match property description
242. Wollongong	Small Leafed Figs	94 Kembla Street and 105-107 Church Street	Lot 1, DP 152892; Lot 1, DP 5095 Lot 101, DP 1198164 and Road Reserve	Local	6288	Update property description to match address and amend name to reflect that there is only 1 Fig remaining, as one was damaged through a traffic accident and removed

	Suburb	Item Name	Address	Property Description	Significance	Item No	Reason
243.	Wollongong	Wollongong Railway Station Group	Lowden Square Lot 1 Railway Station Square	Lot 1, DP 1001500	State	6382	Update address to match property description
244.	Wollongong	Bandstand and Marble Plaque Commemorating Bass and Flinders' Landing	Market Place—Market Square Park Market Square, Market Street	MSP-405 Lot 1, DP 1155373	Local	6271	Add correct address and update property description to match
245.	Wollongong	Wawarra Historical Society Museum (Former Wollongong Post Office) Original Wollongong Telegraph and Post Office	11 Market Street	Lot 10, DP 1107297	State	5910	Update name and significance to reflect state heritage listing (SHR: 01940)
246.	Wollongong	Wollongong Congregational Church	33 Market Street	Part Lot 4, Section 2, DP 975294 Lot 4, DP 1138830	Local	6390	Update property description to match address and update item name
247.	Wollongong	Wollongong Court Houses, c1890 and c1975 Courthouse Complex	43 Market Street	Lot 4, Section 3, DP 975294 Lot 5, DP 1129967	Local	5911	Update property description to match address and update item name
248.	Wollongong	Market Square	Bounded by Market Street, Market Place and Harbour Street	MSP-405 Lot 1, DP 1155373	Local	6386	Update property description to match address
249.	Wollongong North Wollongong	Victorian House	34 Porter Street	Lot 6, Section 1, DP 11656	Local	6470	Incorrect suburb and amend listing name
250.	Wollongong	"Little Milton"	31–33 Smith Street	Lot 101, DP 591663	State	5907	Update address to match property description
251.	Wollongong	Headmaster's residence	53 Smith Street	Lots 1-4, DP 781988 and Lot 1, DP 61915	Local	5935	Consolidated with listing with same item number for Wollongong Public School
252.	Wollongong	"Llanely" Cottage House	86 88 Smith Street	Lot 14, DP 613775 Lot 1, DP 1200134	Local	6395	Update property description to match address following redevelopment of site
253.	Wollongong	Masonic Hall	88 Smith Street	Lot 13, DP 613775 Lot 1, DP	Local	6396	Update property description to

Suburb	Item Name	Address	Property Description	Significance	Item No	Reason
254. Wollongong	Wollongong Cemetery, including Nicholles Vault	Swan Street	Lots 1-5 and 7-20, Section 38, DP 759104, Crown Land, Folio 12, Volume 460 Closed road, and-unlisted-parcels within Wollongong Cemetery Lot 7025 Crown DP 1026284, Lot 54, DP 751299 and closed road	Local	6282	match address following redevelopment of site Wollongong
255. Wombarra Coledale	Sawmill*	14-18 Morrison Avenue	Lot D, DP 373278	Local	6256	Incorrect suburb
256. Wombarra	"Altamar" "Alummar"	129 Morrison Avenue	Lot 6, DP 1004625	Local	6141	Incorrect item spelling
257. West Depto Wollongong	Coral Vale Kitchen Building (former)	56 60 Smiths Lane	Lot 202, DP 1017684 Lot 309 DP 1203219	Local	5978	Update property and address to reflect "The Vale" subdivision of site. Also Heritage Map change - table 5
258. Wollongong	Anglican Church (former)	57 Wollongong Road	Lot 3, DP 18020	Local	61068	Add property street address
259. Wollongong	Wollongong Colliery*	Lot 422-425 Wollongong Road	Part Lot 14, DP 255284; Lot 1, DP 321054 and Part Lot 244, Part Lot 255 and Part Lot 258, DP 751278 Lots 422-425, DP 1123956 and Lot 3, DP 255284	Local	7100	Add street number to address and update property descriptions to match address
260. Wollongong	Wollongong Community Hall	82 Wollongong Road	Part Lot 42, DP 751278 Lot 421, DP 1108957	Local	61062	Add street number to address and update property descriptions to match address
261. Wollongong	Wollongong	Wollongong Mine Manager's Cottage (former) and Tennis Court	63 Wollongong Road	Part Lot 14, DP 255284	Local	Add street number to property address
262. Wollongong	Cabbage Palms and Moreton Bay Figs Moreton Bay Fig	40 Wollongong Road Bankbook Park, Bankbook Drive	Lot 203, DP 1017684 Lot 329, DP 1207443	Local	61020	Update address to reflect subdivision and update property description to match. Update listing to reflect remaining Moreton Bay Fig.

Suburb	Item Name	Address	Property Description	Significance	Item No	Reason
Woonona	Woonona Infants School	5A Gray Street	Lots 1 and 2, DP 795373	Local	6196	Add street number to address and update property descriptions to match address
Woonona	Former Bulli Police station and Court House	329-331 Princes Highway	Lot 1, DP 199573	Local	5926	Update item description to reflect current use
Woonona	Former Vista Theatre	335-339 Princes Highway	Lots 1-3, DP 196949	Local	61008	Update property description to match address
Woonona	Commercial building	373-375 Princes Highway	Lot 10, Section 6, DP 605782	Local	6455	Update property description to match address
Woonona	Former Woonona Uniting Church	444-448 Princes Highway 2-8 Popes Road	Lot 1, DP 1109952 Lot 71, DP 1160947	Local	61007	Update item description to reflect current use and add correct address, update property description to match address and amend listing name
Woonona	Federation House	511 Princes Highway	Lot 1, DP 875602 Lot 1, DP 1139658	Local	6198	Update property description to match address
Woonona	Pendlebury Rest Park	Corner Princes Highway and Gray Street	Lot 1, DP 956545 and Lots 1 and 2, DP 911694 Lots 100, DP 1130698	Local	6199	Update property description to match address
Woonona	Rixons Pass Road—Landscape & walls	Rixons Pass	Road reserve	Local	6518	Add landscape to listing name to ensure whole feature is covered by listing
Woonona	Federation House	22-24 York Road	Lot 1, DP 529997	Local	6458	Update address to match property description and amend listing name
Yallah	"Yallah" House	601 Princess Highway	Lot 1, DP 156657	Local	6437	Add name of house to item description and add street number to match property description. Also Heritage Map change – table 5

Table 5: Proposed Mapping Changes

These include minor changes to ensure the mapping accurately captures the curtilage of each item. For example:

- Adjustment of curtilage boundaries following parcel subdivision;
- Correction of historic errors dating to pre-aerial photography mapping systems;
- Amendment of curtilages to that recommended in the West Dapto Heritage Study.

It is noted items highlighted in blue are under Wollongong City Council ownership or management:

	Suburb	Item Name	Address	Property Description	Significance	Item No	Mapping Amendment Required	Map Number
1.	Austinmer	Austinmer Railway Station	End of Moore Street Lot 1 Railway Lands	Rail reserve Lot 1, DP 1149493	State	6259	Update mapping to match State Heritage listing (SHR: 01077)	1
2.	Austinmer	Uniting Church	48 Moore Street	Lot 11 & 12, Section C, DP 2111	Local	6507	Update mapping to include Lot 11 Sec C DP 2111	2
3.	Avondale	House, ("Avondale Homestead")	301 Avondale Road	Lot 224, DP 789384	Local	5916	Update mapping to reflect proposed curtilage in West Dapto Heritage Study	3
4.	Avondale	House ("Linbrook")	84 South Avondale Road	Lot 9, DP 3083	Local	5982	Update mapping to reflect proposed curtilage in West Dapto Heritage Study	4
5.	Avondale	House ("Mooreland")	384 Avondale Road	Part Lot 6, DP 3083	Local	5984	Update mapping to reflect proposed curtilage in West Dapto Heritage Study	5
6.	Brownsville	Osborne Memorial St Luke's Church and Cemetery Complex (Including Church Hall and Landscape)*	33-37 35 Prince Edward Drive	Part Lot 18, DP 751263 and Lot 18, DP 1023004 Lot 203 DP 1234890	Local	5915	Update mapping to include whole lot Boundary	6

Suburb	Item Name	Address	Property Description	Significance	Item No	Mapping Amendment Required	Map Number
Bulli	Former railway route - Bulli Colliery Rail Bridge and Alignment (Former)*	Bulli Colliery to rail bridge embankments	Lot 2, DP 1094964 Lot 50, DP 1045297; Lot 52, 53, DP 1201697	Local	6257	Update mapping to remove approved subdivision, industrial lot and amalgamate with item 5988	12
Bulli	Norfolk Island Pine Beach Front Planting	Bulli Point, Point Street	Foreshore Lots 4-6, DP 7813 and Lot 1, DP 231244	Local	6191	Update mapping to capture all plantings	11
Bulli	Site of Captain Westmacott's Homestead "Sandon Cottage"*	Bulli Point (Sandon Point) Trig Station Sandon Point, Point Street	Lots 1-6 and 103, DP 7813 Lot 1 DP 231244	Local	6358	Update mapping to capture site of Sandon's Cottage and note archaeological potential	13
Bulli	Memorial Obelisk	66 Park Road Lot 100 Park Road	Lot 801, DP 774190 Lot 100, DP 1141139	Local	6174 61081	Separated to be an independent item from item no. 6174. Mapped as separate item No. 61081	7
Bulli	St Augustine Anglican Church of Australia and Cemetery*	66 Park Road	Lot 801, DP 774190	Local	6174	Separated to be an independent item from item no. 61081. Mapped as separate item No. 6174	8
Bulli	Federation House, Former Anglican Rectory	54 - 56 Park Road	Lot 1002, DP 873075	Local	6177	Update mapping to reflect subdivision and match existing lot boundary	9
Bulli	House	244 Princes Highway	Lot 21, DP 1016175	Local	6183	Update mapping to reflect lot boundary	10
Bulli	Victorian House	230 Princes Highway	Lot 162, DP 602341 Lot 2, DP 1130117	Local	6447	Update mapping to reflect lot boundary	14
Bulli	Former Sherbrooke Union Church	Princes Highway (in Grevillea Park)	Lot 1, DP 772593	Local	6450	Update mapping to reflect location of	15

	Suburb	Item Name	Address	Property Description	Significance	Item No	Mapping Amendment Required	Map Number
							Church	
16.	Bulli	Bulli Railway Station	Franklin Avenue and Railway Street Lot 100 Park Road	Rail reserve Lot 100, DP 1141139	Local, State	6484	Update mapping to match State Heritage	16
17.	Bulli	Boat Sheds	Sandon Point	Lot 103, DP 7813	Local	6487	Reduce the size to reflect location of the boat sheds and align with boundary of Lot 103 DP 7813	17
18.	Bulli	Bulli Station Master's Residence	41 Park Road	Lot 1, DP 809643	Local	6500	Update mapping to reflect lot boundary	18
19.	Gataraet Woonona	Site of former "Biddulph Farm"	Mt Ousley Road intersection with Rixons Pass Road	Lot 30, DP 751301	Local	61064	Change to include only the eastern portion of Lot 30 DP 751301 as per recommendation of RMS Statement of Heritage Impact prepared by Artefact dated November 2016 Update suburb	85
20.	Cleveland	House ("Cleveland")	273 Cleveland Road	Lot 1, DP 194419	Local	5950	Update mapping to reflect proposed curtilage in West Dapto Heritage Study	19
21.	Clifton	Cottage	6 Clifton School Parade	Lot 200, DP 1070345 Lot 5, DP 1175954	Local	6133	Update mapping to reflect amended address and property description and location of Cottage	20 & 21
22.	Clifton	Former School Residence	30 Clifton School Parade	Lot 21, DP 1123807 Lot 216 DP 1252684	Local	6134	Update mapping to reflect amended address and property description and location of	22

Suburb	Item Name	Address	Property Description	Significance	Item No	Mapping Amendment Required	Map Number
						Residence	
23. Coledale	Coledale Railway Station	Coledale Railway Street	Rail reserve Lot 1, DP 1188983	Local	6350	Update mapping to reflect location of Railway complex	23
24. Corrimal	Ziem's Shops and Outbuildings	328-330 Princes Highway	Lot 104 Lots 104 and 105, DP 1062386	Local	6463	Update mapping include Lot 105 DP 1062386	24
25. Dapto	Memorial Wall, Dapto War Memorial Olympic Swimming Pool	Bangaroo Avenue	Lot 127, DP 242665	Local	61015	Update mapping to capture Memorial Wall	26
26. Dapto	Bunya Pine	89 93 - 108 Princes Highway	Lot 1, DP 1050533	Local	61025	Update mapping to reflect location of the Pine	27
27. Dapto	Dapto Railway Station	Station Street	Lot 2, DP 856667	Local	6435	Update mapping to match NSW State Government s.170 Heritage Register curtilage	29
28. Dapto	Mt Brown reserve Landscape Area	Mt Brown Reserve	Lot 4, DP 223746; Lot 12, DP 233464; Lot 109, DP 1050302 and Lot 22, DP 774118 and Lots 31 DP 1175058, Lot 141 DP 2239830, Lot 52 DP 1233938, Lot 6, 7, 9, 10 & 11 DP 1147392, Lot 50 & 51 DP 1233938	Local	6339	Amend Mapping to remove residential development and follow boundary of Council Natural Area Reserve	28
29. Dombarton	Railway cutting—Unanderra/ Moss Vale railway line	Dombarton Lot 1 Reddalls Road	Lot 1, DP 185282	Local	6499	Update mapping to reflect lot boundary	69

Suburb	Item Name	Address	Property Description	Significance	Item No	Mapping Amendment Required	Map Number
30. Farmborough Heights	House "Non Such" / "Farmborough"	351 Farmborough Road	Lot 1, DP 628538	Local	6318	Update mapping to reflect proposed curtilage in West Dapto Heritage Study	30
31. Tarrawanna Fernhill	Farrell Park	Douglas Road, Wallace Road and Ross Street	Lot 38, DP 35954	Local	6221	Update mapping to reflect lot boundary	63
32. Figtree	"Greenhills" and "Hillside" and Gardens	170-190 Princes Highway	Lot 100, DP 1047547 Lots 104-111, DP 1132818	Local	6403	Update mapping to reflect location of House and Gardens and remove aged care development from curtilage	31
33. Helensburgh	Cottage	12 Foster Street	Lot 294, DP 752033 Lot 100, DP 1129182	Local	6108	Update mapping to reflect subdivision and subsequent property description amendment	32
34. Helensburgh	Helensburgh Railway Station	Tunnel Road	Rail reserve Lot 9, DP 1129965	State	6343	Update mapping to reflect location of Railway complex	33
35. Horsley	"Reed Park" entrance gates (former)	Bong Bong Road	Lot 101, DP 617745	Local	61018	Update mapping to reflect location of gates	34
36. Horsley	Former Tramway alignment (former) (see also under suburb of Cleveland)	Bong Bong Road Lot 834 Wholahan Avenue and Public Reserve 44 Mallion Avenue	Lot 601, DP 1054648; Lot 62, DP 751278 Lot 228 DP 1165205 and Lot 834 DP 1172488	Local	61069	Update mapping to capture Council Reserves and remove private lots in subdivision	35
37. Huntley	Trees (former site of "Benares")	410 Cleveland Road	Lot 101, DP 856793	Local	5979	Update mapping to reflect lot boundary	25
38. Huntley	House ("Glen Avon")	456 Cleveland Road	Lot 18, DP 3083	Local	5980	Update mapping to reflect proposed curtilage in West Dapto Heritage Study	36
39. Huntley	Site of Former "Waples" Butchery	Lot 1 Bong Bong Road Huntley	Lot 1 DP 810104	Local	61079	Update mapping to reflect Archaeological Management Area	37

Suburb	Item Name	Address	Property Description	Significance	Item No	Mapping Amendment Required	Map Number
						(Ecological, 2018)	
40. Kanahooka	House "Rondanella"	23 Rondanella Drive	Lot 202, DP 1034062	Local	6430	Update mapping to reflect lot boundary	38
41. Kembla Grange Dapto	Hoop Pines	Part Lot 223 Paynes Road	Part Lot 223, DP 751278	Local	6328	Correct suburb. Update mapping to reflect location of the Pines	41
42. Kembla Grange	Slab Hut	303 Reddalls Road and adjoining road reserve	Lot 103, DP 840320 and Road reserve	Local	6433	Update mapping to capture item	42
43. Kembla Grange	"Stane Dyke" Homestead and Outbuildings	Sheaffes Road 17 Stane Dyke Road	Lot 1, DP 986796 Lot 1000 DP 1239565	Local	5976	Update mapping to reflect new subdivision	40
44. Kembla Grange	Newton Park and Gardens	451 Princes Highway; (next to Kembla Grange racecourse)	Lot 12, DP 829115 1238073	Local	5949	Update mapping to reflect lot boundary	39
45. Kembla Heights	Windy Gully Cemetery*	Lot 3 Cordeaux Road, Windy Gully	Lot 172, DP 751278 Lot 3 DP 1103781	Local	5941	Update mapping to reflect property description amendment and location of cemetery	43
46. Kembla Heights	Former Post Office	Lot 3 Harry Graham Drive	Part Lot 160, DP 751278 Part of Lot 3, DP 1103666	Local	5946	Update mapping to reflect location of Port Office Building	44
47. Farmborough Heights Kembla Heights	4 Cottages and gardens Cottages and Edna Walling Garden Precinct	End of Lot 17 Farmborough Road	Lot 17, DP 255285	Local	6496	Update mapping to capture site of four cottages and Garden Precinct	46
48. Farmborough Heights Kembla Heights	Pit Pony Stables*	West end of Lot 17 Farmborough Road	Lot 17, DP 255285	Local	6320	Update mapping to capture Pit pony Stables and site of Tennis Court	45
49. Kembla Heights	Site of Pioneer Kerosene Works*	Between American Creek and Cordeaux Road	Part Lot 4, DP 751278 Lot 1, DP 1103781	Local	6411	Update mapping to capture former location of Kerosene Works	48

Suburb	Item Name	Address	Property Description	Significance	Item No	Mapping Amendment Required	Map Number
Lilyvale	Shacks and cabins Royal National Park Coastal Cabin Communities	Burning Palms, Royal National Park	Lot 1, DP 56059 Lot 101, DP 1193169	Local State	6483	Update mapping to match State Heritage Listing (SHR: 01878)	49,50,51
Lilyvale	Shacks and cabins Royal National Park Coastal Cabin Communities	Era Beach, Royal National Park	Lot 2, DP 63741 Lot 101, DP 1193169	Local State	6483	Update mapping to match State Heritage Listing (SHR: 01878)	49,50,51
Lilyvale	Shacks and cabins Royal National Park Coastal Cabin Communities	Little Garie Beach, Royal National Park	Lot 1, DP 752018, Mineral Leases 2 and 3, DP 752018 Lots 13 & 44, DP 752018	Local State	6483	Update mapping to match State Heritage Listing (SHR: 01878)	49,50,51
Mt Kembla	Post Office/Store	314 Cordeaux Road	Lot 20, DP 855333 Lots 1 and 3 DP 1216466	Local	5945	Update mapping to reflect property description amendment	47
Mt Keira	Mt Keira scout camp	Mt Keira Road	Lot 1, DP 255281	Local	6471	Update mapping to reflect proposed curtilage boundary in NPWS Conservation Management Plan prepared by Robertson and Hindmarsh Pty Ltd dated June 2019	81
Otford	Shacks and cabins Royal National Park Coastal Cabin Communities	Bulgo Beach, Royal National Park	Lot 2, DP 63741 Lot 1, DP 56059 and Lot 21, DP 1193149	Local State	6483	Update mapping to match State Heritage Listing (SHR: 01878)	50,51,52
Port Kembla	St Stephen's Anglican Church of Australia, including rectory and hall	111 Military Road	Lots 34, 35 and 36, DP 7804	Local	6305	Update mapping to include Lot 34 DP 7804	53
Port Kembla	Hill 60*, Fisherman's Beach, Boilers Point, Red Point and MM	Hill 60, Fisherman's Beach, Boilers Point and MM Beach	Lot 3, DP 86079; Lots 1 and 3, DP 531524; Lots 1 and 2, DP 614555;	State	61043	Consolidated several Hill 60 listings (6302, 6417, 6117) and update	52

Suburb	Item Name	Address	Property Description	Significance	Item No	Mapping Amendment Required	Map Number
	Beach*		Reserve 71700 and 73221; Lot 1, DP 614555; Lot 1, DP 152538 and Lots 7008-7010 and 7048-7050, DP 1052504; Lot 7048, DP 1052504; Lot 7050, DP 1061649; Lot 7009, DP 1059827; Lot 7049, DP 1061648; Lot 7008, DP 1059827, Lots 1 & 2 DP 706046, Lot 2 DP 614555, Lot 90 DP 200729			property mapping to match property description and cover Hill 60 Area – excluding area covered by Three Ports SEPP	
58. Port Kembla	House and Shop	123 Military Road	Lot 28, Section 4, DP 7804	Local	6311	Incorrectly mapped at 2 Third Ave, Lot 2 DP 212108. Map correct Lot and DP	54
8 Port Kembla	"Guinery's", Port Kembla Hotel	54-58 Wentworth Street	Lots 31 and 32, Section 2, DP 5868	Local	6421	Update mapping to reflect property description amendment	55
59. Port Kembla	Coomaditchie Lagoon and surrounds*	Parkes Street Cowper Street	Lot 1, DP 182391	Local	6424	Update mapping to reflect property description (excluding Community Centre)	56
60. Port Kembla	Port Kembla Olympic Pool	Olympic Boulevard	Lot 2, DP 345786 and Lot 51, DP 1047304	Local	6431	Update mapping to reflect the pool area as defined by Lot 2 DP 345786 and Lot 51 DP 1047304 to the south	57
61. Port Kembla	Bomb shelter*	59 Military Road	Lot 1, DP 1037234	Local	6478	Update mapping to reflect lot boundary	58
62. Russell Vale	Hills Figs Group of Fig Trees	50 Terania Street	Road reserve and Lot 25 DP 23149	Local	6202	Update Mapping to reflect location of	59

Suburb	Item Name	Address	Property Description	Significance	Item No	Mapping Amendment Required	Map Number
63. Russell Vale	Moreton Bay fig	Russell Vale Golf Course, 618 Princes Highway	Lot 855, DP 1105102	Local	6211	Figtrees and include reserve located on Lot 25 DP 23149	
64. Scarborough	Scarborough Railway Station	Scarborough Lot 1 Railway Avenue	Rail reserve-Lot 1, DP 811416	State	6349	Update mapping to reflect location of Figtree	60
65. Stanwell Park Stanwell Tops	Lawrence Hargrave Memorial Park	Bald Hill Lookout, Otford Drive Road	Lot 237, DP 5858 Lot 243, DP 658560; Lot 244, DP 658561; Lot 245, DP 658562; Lot 246, DP 658563; Lot 247, DP 658564; Lot 248, DP 658565; Lots 237 & 238, DP 1155156; Lots 239 & 240, DP 1155165; Lot 1, DP 1180011; Lot 4, DP 1191773; Lots 230-236, DP 5858; Lot 1, DP 118841, Lot 1, DP 118842 and Lot 1, DP 309491	Local	5918	Update mapping to reflect lot boundaries	62
66. Thirroul	Thirroul Baths precinct	Bath Street Cliff Parade	Part Lot 405, DP 881119; Lots 30 - 33, Section 3, DP 2185 and Lot 1, DP 964636	Local	61030	Reduce curtilage to cover historic Beach Reserve including Thirroul pool, Pavilion and SLSC	64
67. Thirroul	Thirroul Railway Station	Railway Parade	Rail reserve Lot 107, DP 1156609	State	6352	Update mapping to reflect State Heritage curtilage (SHR: 01269)	65

Suburb	Item Name	Address	Property Description	Significance	Item No	Mapping Amendment Required	Map Number
Thirroul	Old Railway Barracks	Corner Lawrence Hargrave Drive and Church Street 5 Church Street	Rail reserve Lot 1, DP 1187295	Local	6498	Update mapping to reflect Lot Boundary and location of Barracks Building	66
Unanderra	House "Nudjia"	83A Cummins Street	Lot 23, DP 245683 Lot 2, DP 1135561	Local	6426	Update mapping to reflect subdivision and capture the correct Lot and DP	67
Unanderra	Old Unanderra Public School, formerly Charcoal Public School	136 Princes Highway Corner Princes Highway and Victoria Street	Part Lot 2, DP 795162 Lot 100, DP 1186122	Local	6427	Update mapping to remove Woolworths development from curtilage	68
West Dapto Wongawilli	Coral Vale Kitchen Building (former)	56 60 Smiths Lane	Lot 202, DP 1017684 Lot 309 DP 1203219	Local	61071	Update mapping to reflect address and property description amendments	84
Wollongong	Group of Fig Trees	348-352 Crown Street (grounds of Wollongong Hospital)	Lot 95, Section 3, DP 1258 Lot 200, DP 1206575	Local	5939 5955	Remove inaccurate circle mapped over Wollongong Hospital site	74
Wollongong	Old Wollongong Court House	1 Harbour Street (Corner of Cliff Road)	Lot 1, DP 47921	Local State	5908	Update mapping to reflect lot boundary	70
Wollongong	St Francis Xavier's Cathedral	24 Crown Street (fronting Harbour Street)	Lot 1, DP 86710	Local	5932	Update mapping to reflect lot boundary	71
Wollongong	Smiths Hill Fort	Battery Park, Cliff Road	Lot 69, DP 751299	Local State	5934	Update mapping to reflect lot boundary	72
Wollongong	Wollongong Primary School and Headmaster's Residence	67A Church Street	Lots 1-7, DP 781988; Lot 1, DP 61915 and Lots 1 and 2, DP 307856	Local	5935	Update mapping to include all listed Lots and DPs	73
Wollongong	House (former coach house)	10A-10B Flinders Street	Lot 101, DP 579564 and Lot 102, DP 579564	Local	6274	Update mapping to reflect address and property description	75

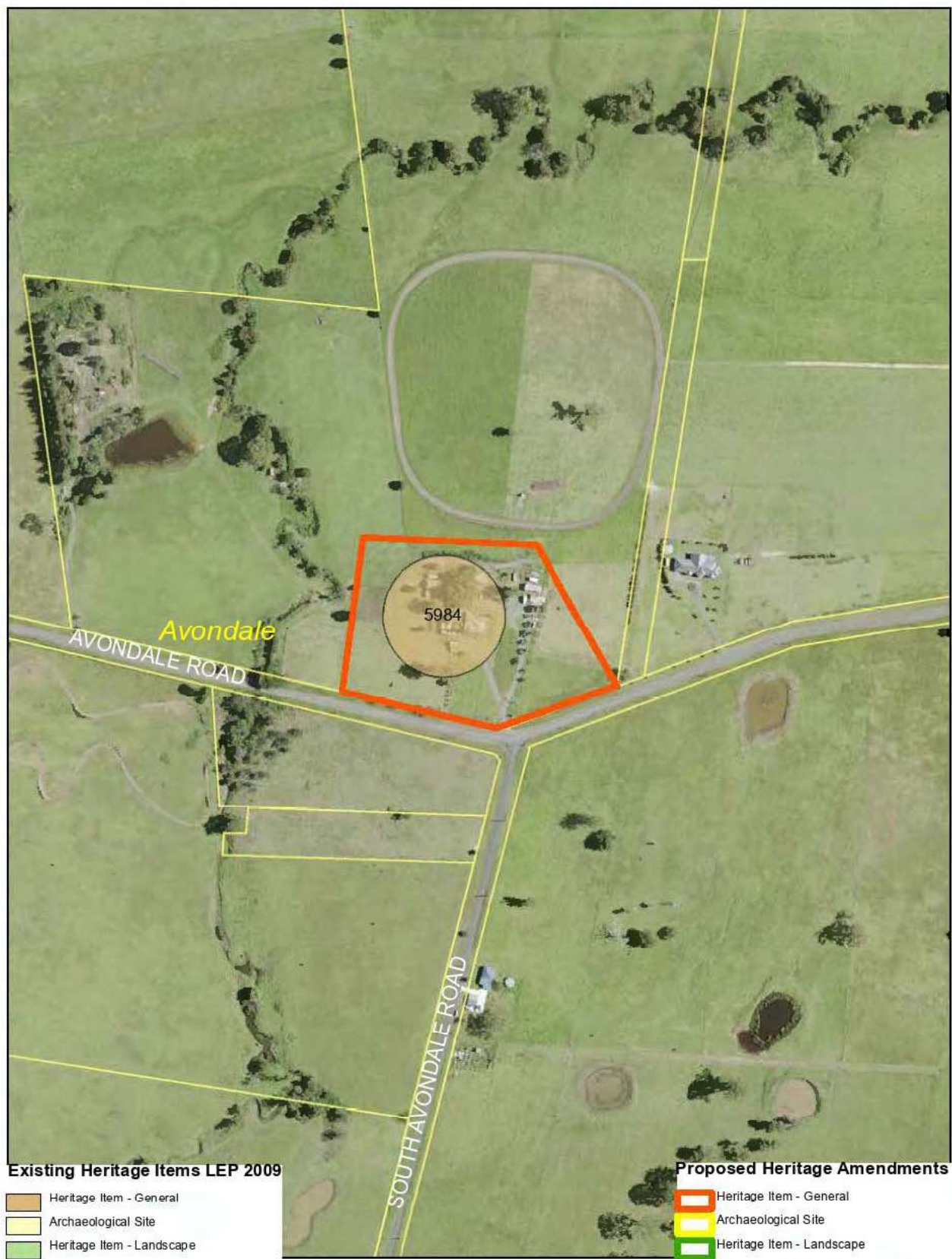
Suburb	Item Name	Address	Property Description	Significance	Item No	Mapping Amendment Required	Map Number
						amendments	
78. Wollongong	Row of Hills Figs	Burrelli Street	Road reserve between Kembla Street and Church Street	Local	6284	Update mapping to reflect the location of the remaining Figtrees	76
79. Wollongong	Stone Steps	Endeavour Drive—Belmore Basin—Drive to Wharf Area	Lot 1, DP 739591 and Part Lot 1, DP 633814	Local State	6364	Update mapping to reflect location of Stone Steps	77
80. Wollongong	Remains of Mt Keira Osborne Wallsend tramway bridge	Cliff Road—Osborne Park	Lot 1, DP 62257 Lot 12, DP 212648	Local State	6367	Update mapping to reflect location of the tramway bridge	78
81. Wollongong	Monument	1 Smith Street (Corner of Harbour Street)	Lot 1, DP 8441	Local	6378	Update mapping to reflect location of monument	79
82. Wollongong	Wollongong Railway Station Group	Lowden Square Lot 1 Railway Station Square	Lot 1, DP 1001500	State	6382	Update mapping to reflect State Heritage curtilage (SHR: 01289)	80
83. Wollongong	Row of California bungalows	10–16 Robinson Street	Lot 36, Section 2, DP 1258; Lot 370, DP 1124821; Lots 38 and 39, Section 2, DP 1258	Local	6514	Update mapping to include 16 Robinson Street (Lot 39 Sec 2 DP 1258) to reflect LEP listing	82
84. Wollongong	Avenue of Norfolk Island pines	Marine Drive	Road reserve	Local	6590	Update mapping to reflect location of Avenue of Pines	83
85. Yallah	Yallah House	601 Princess Highway	Lot 1, DP 156657	Local	6437	Update mapping to reflect lot boundary and exclude more recent structures on site	86



















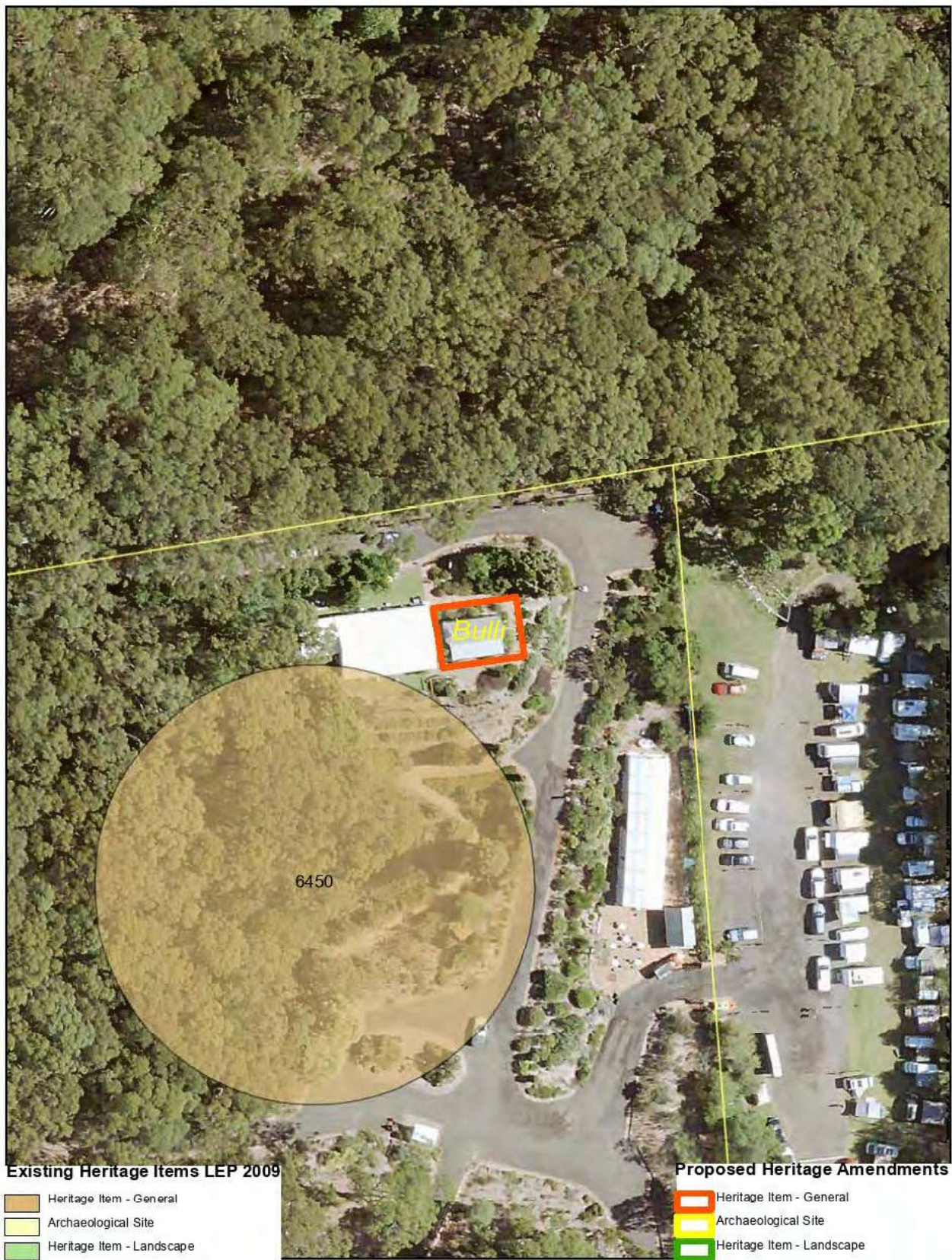








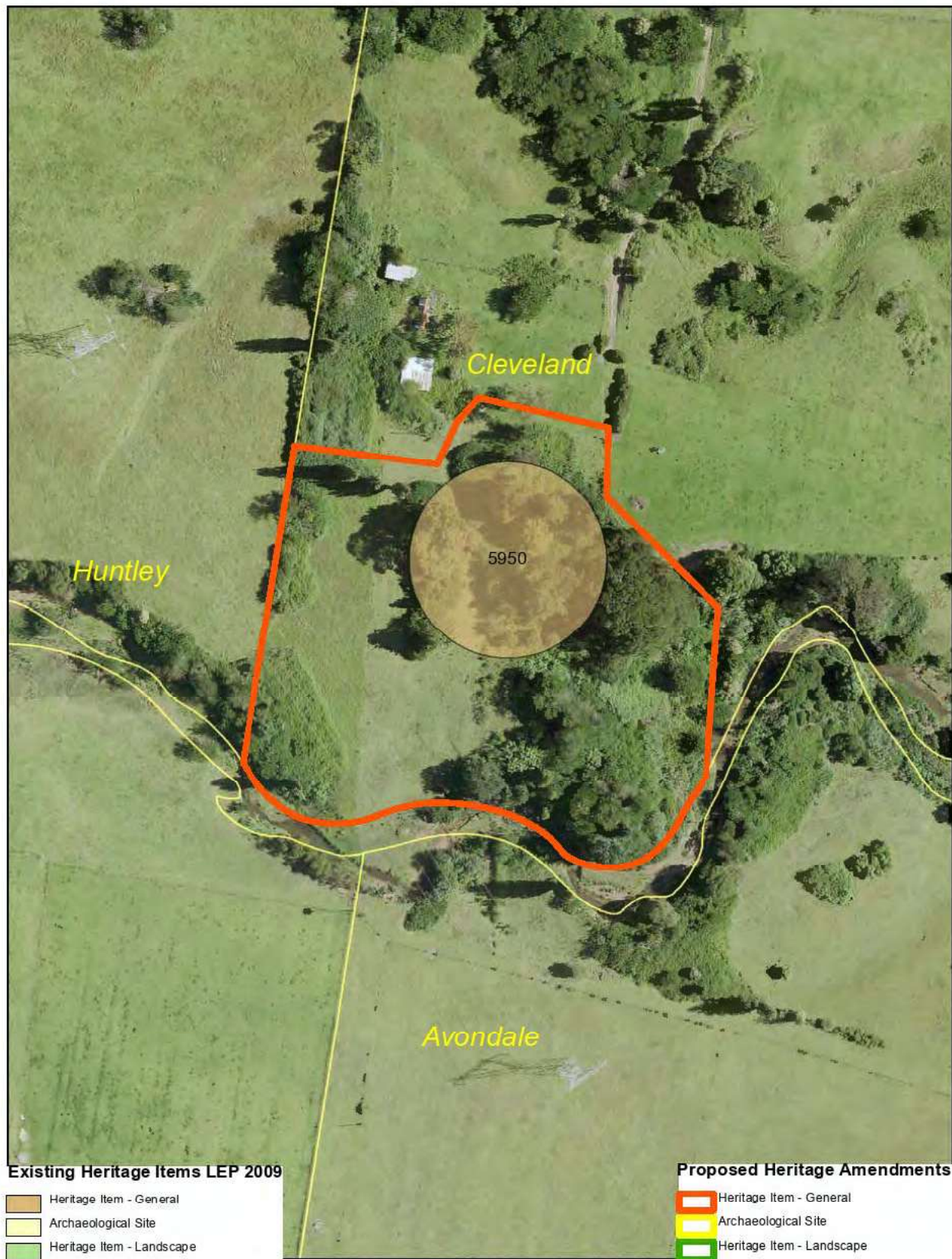






















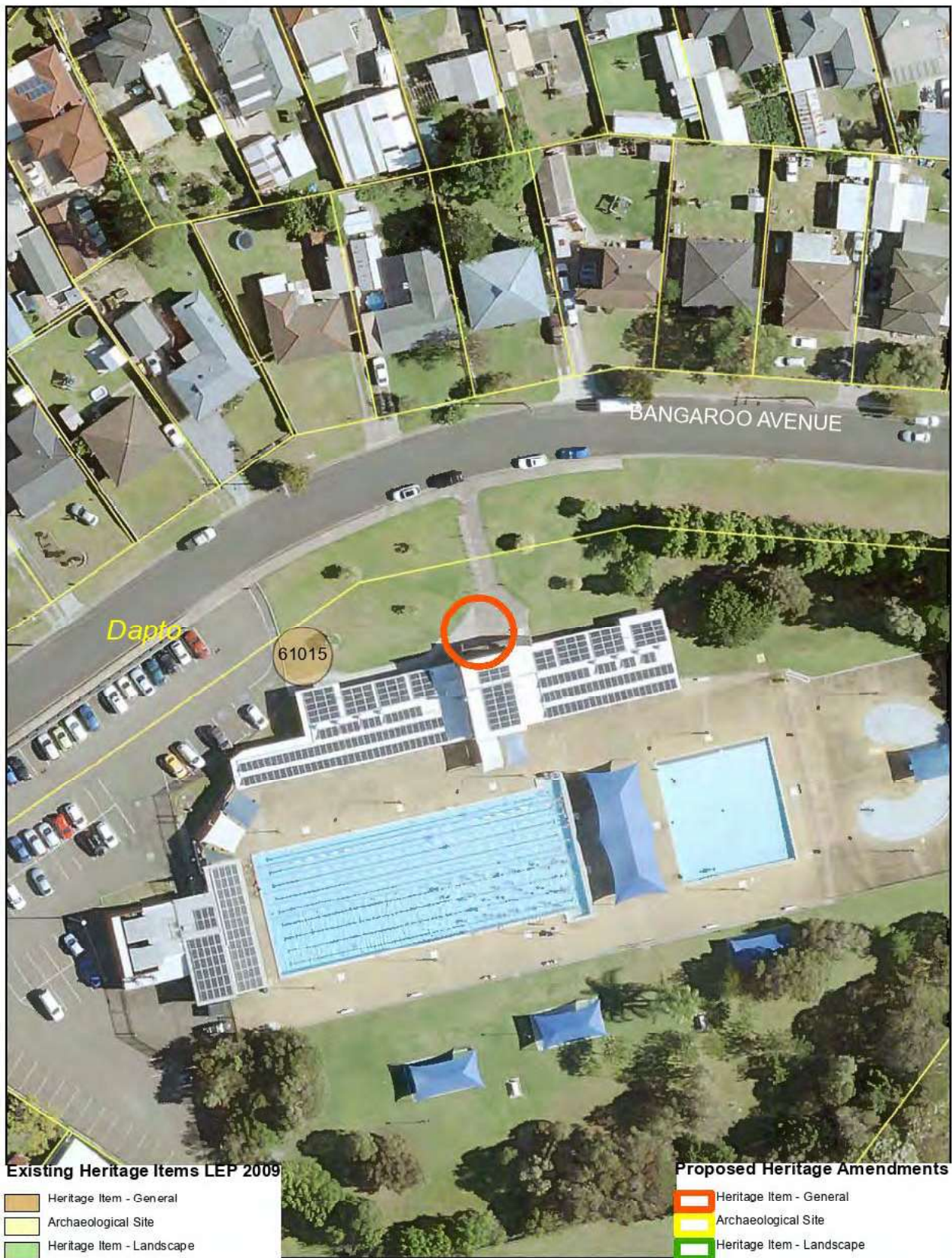


Existing Heritage Items LEP 2009

- Heritage Item - General
- Archaeological Site
- Heritage Item - Landscape

Proposed Heritage Amendments

- Heritage Item - General
- Archaeological Site
- Heritage Item - Landscape















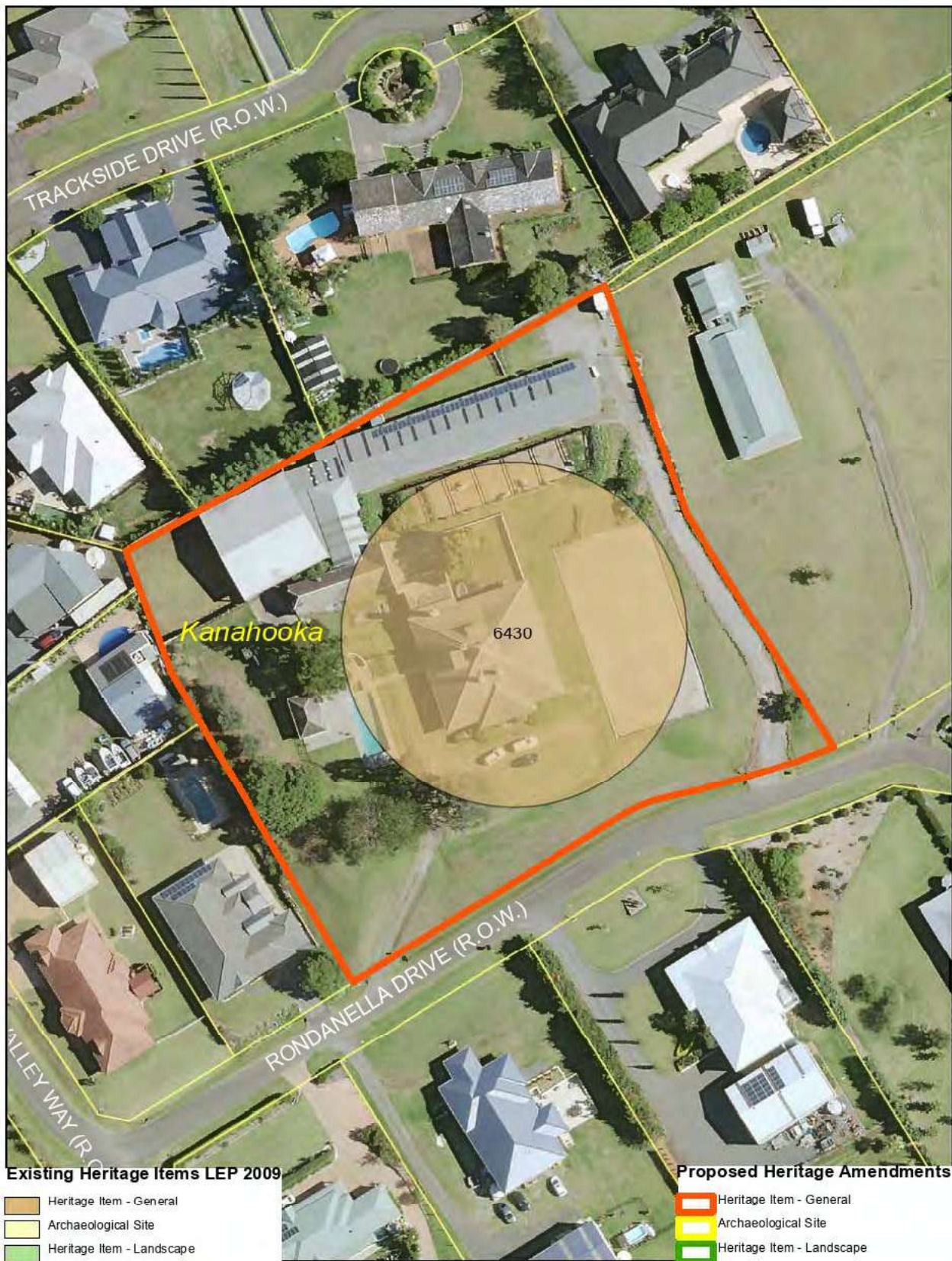














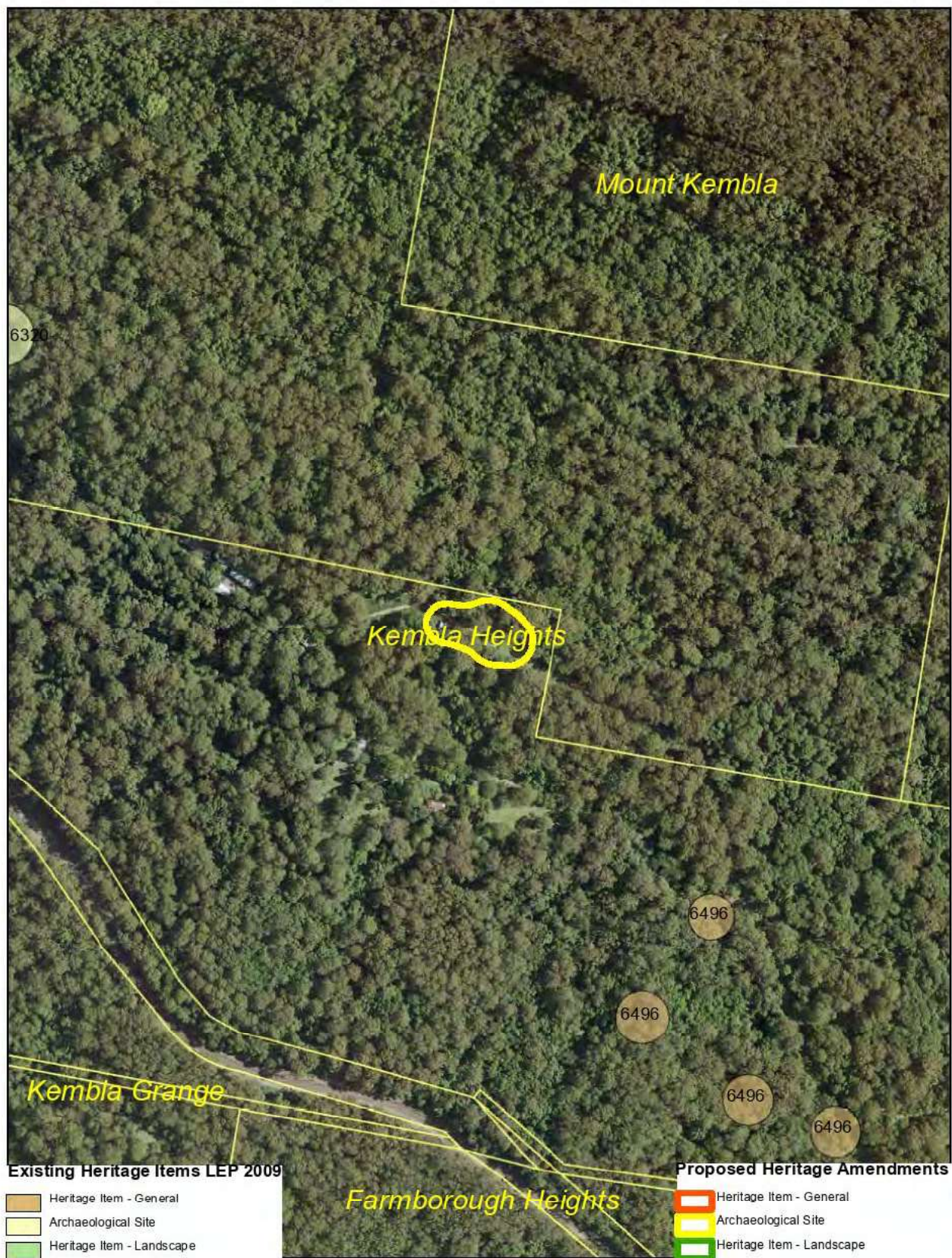






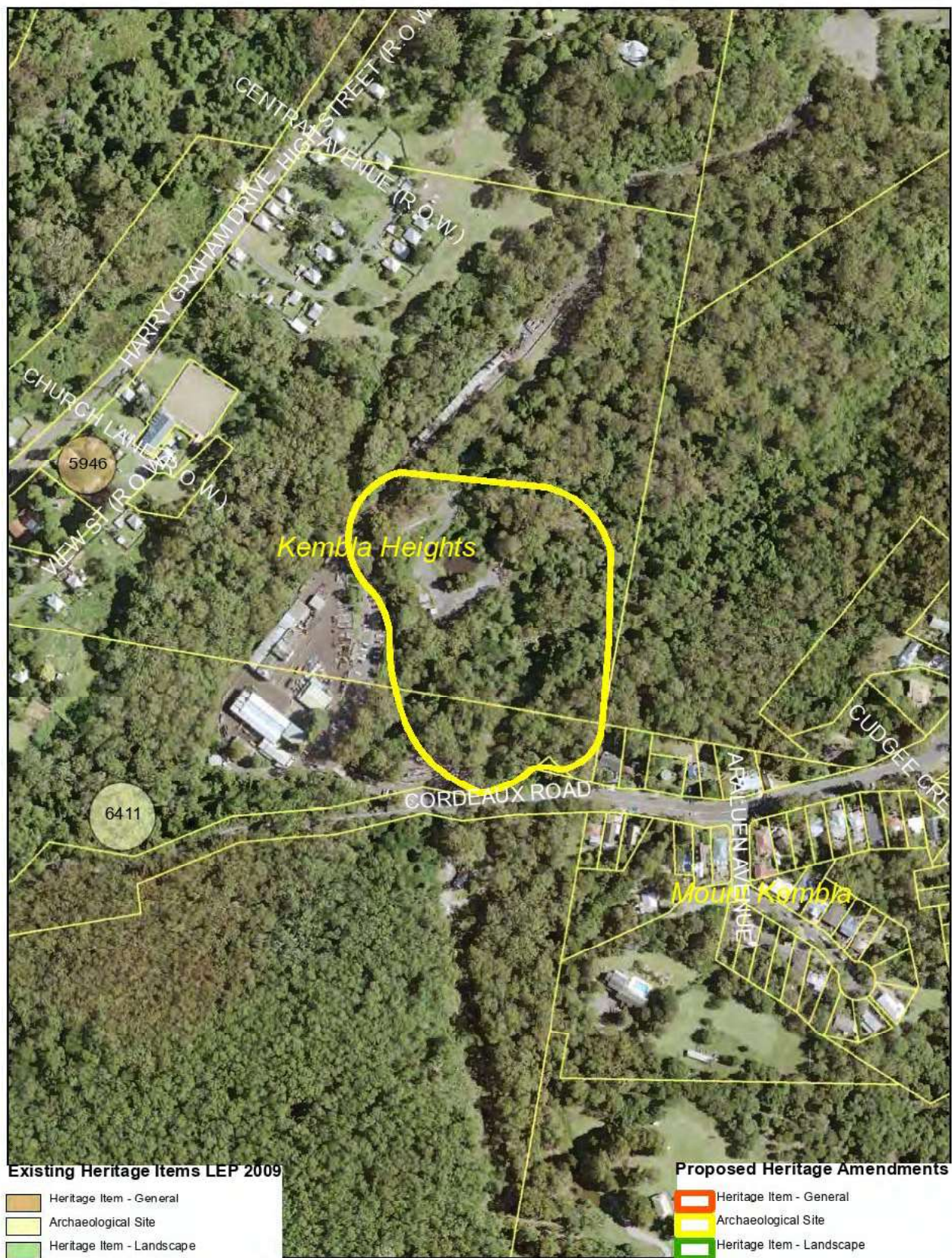


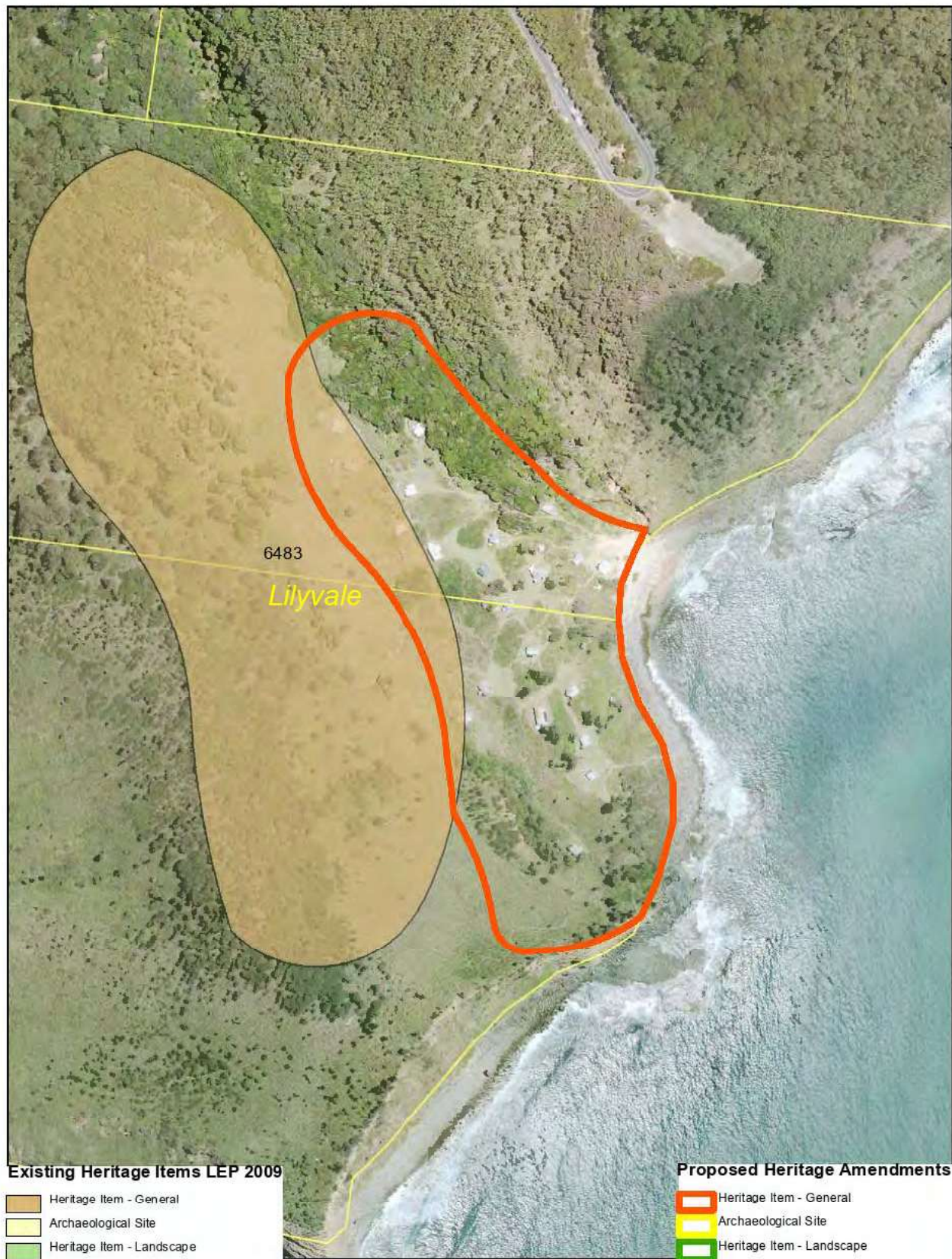


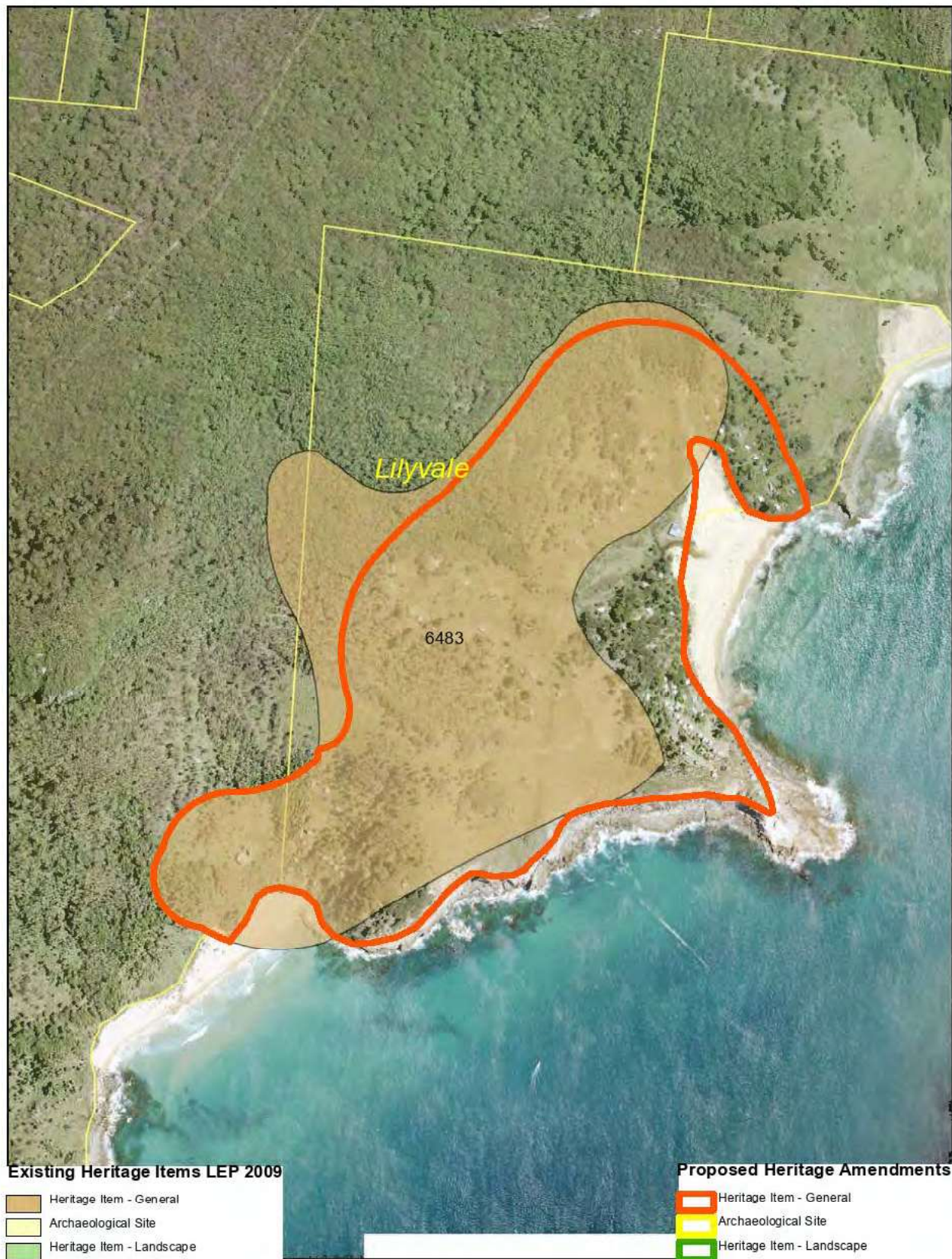
















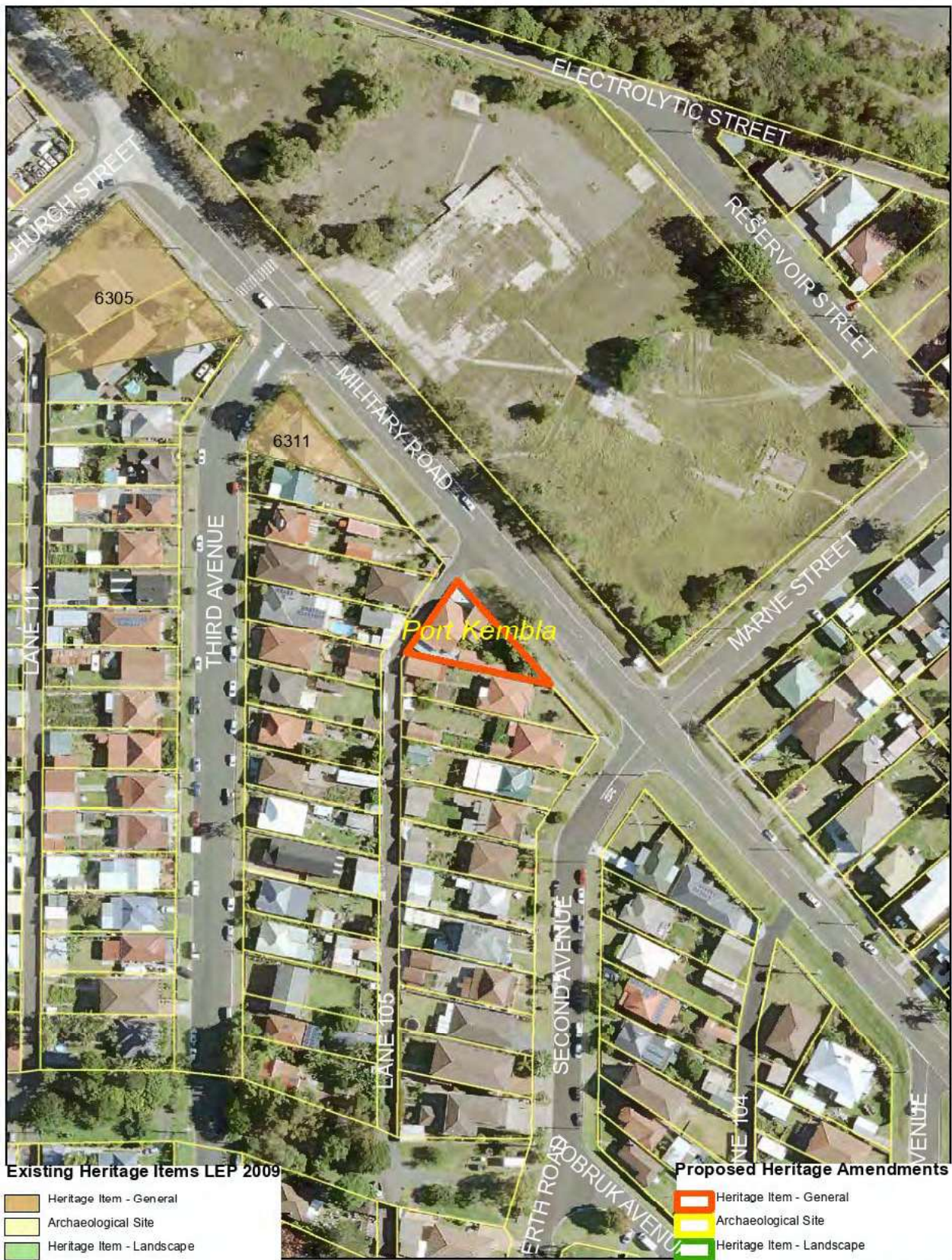
Existing Heritage Items LEP 2009

- Heritage Item - General
- Archaeological Site
- Heritage Item - Landscape

Proposed Heritage Amendments

- Heritage Item - General
- Archaeological Site
- Heritage Item - Landscape

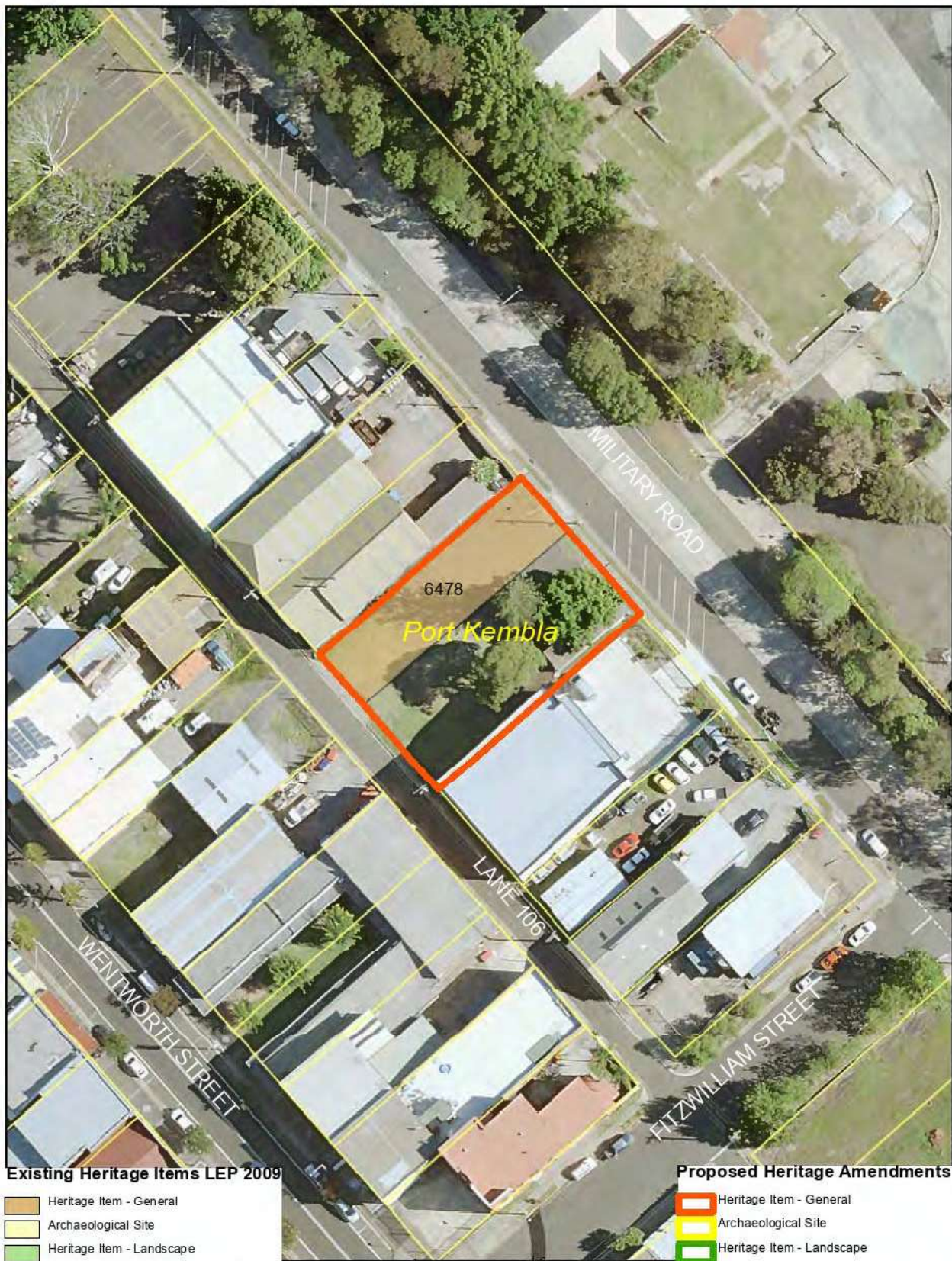


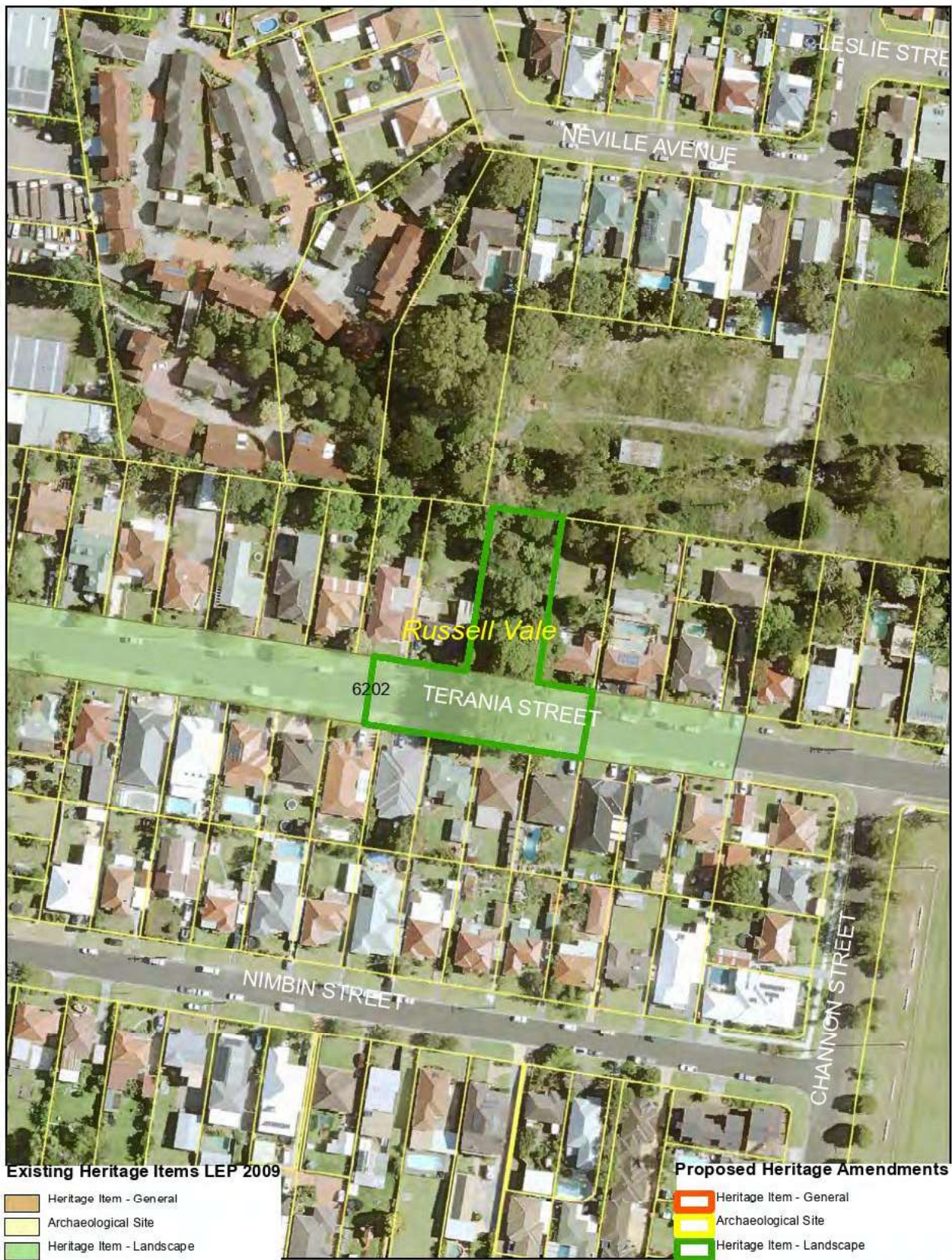




















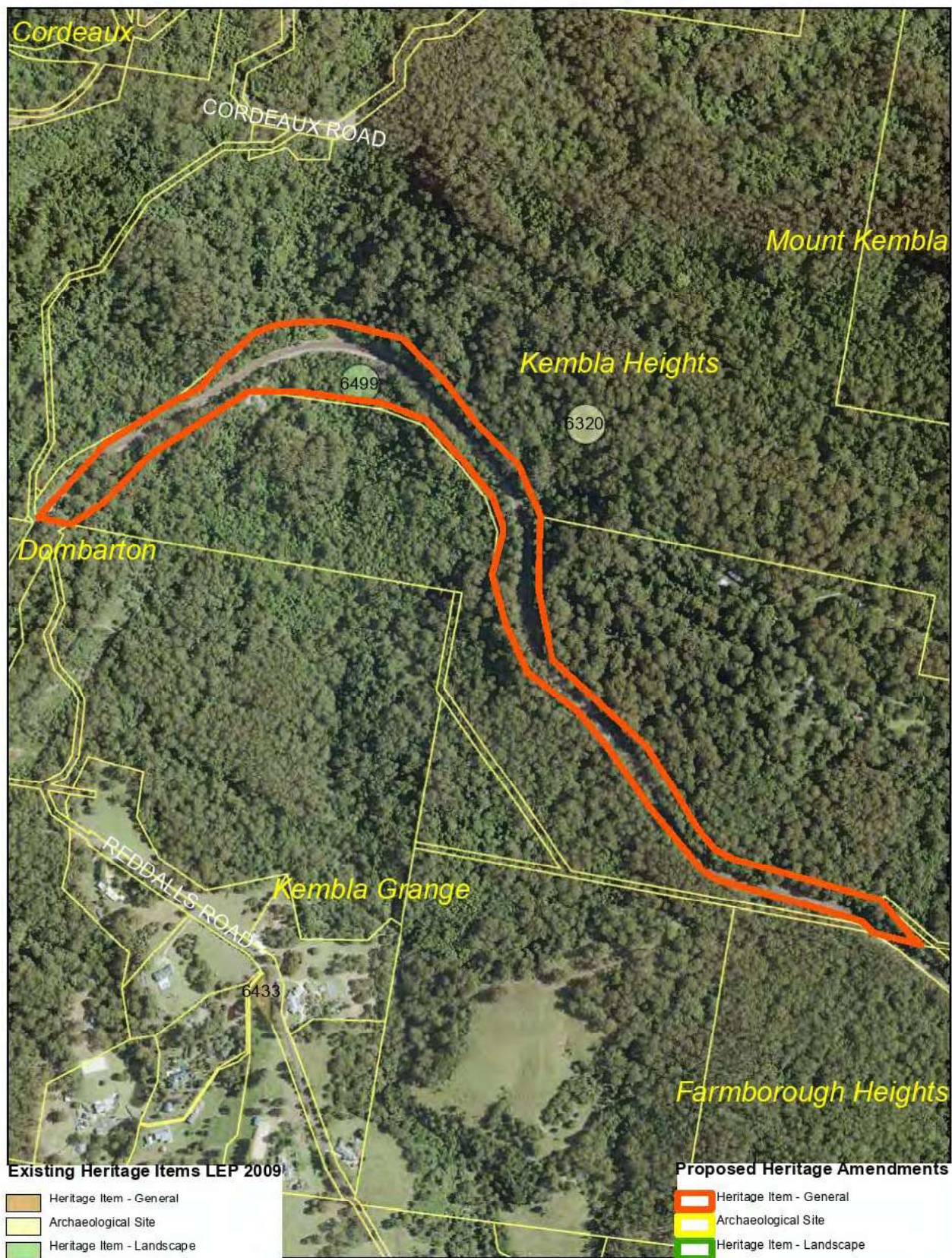










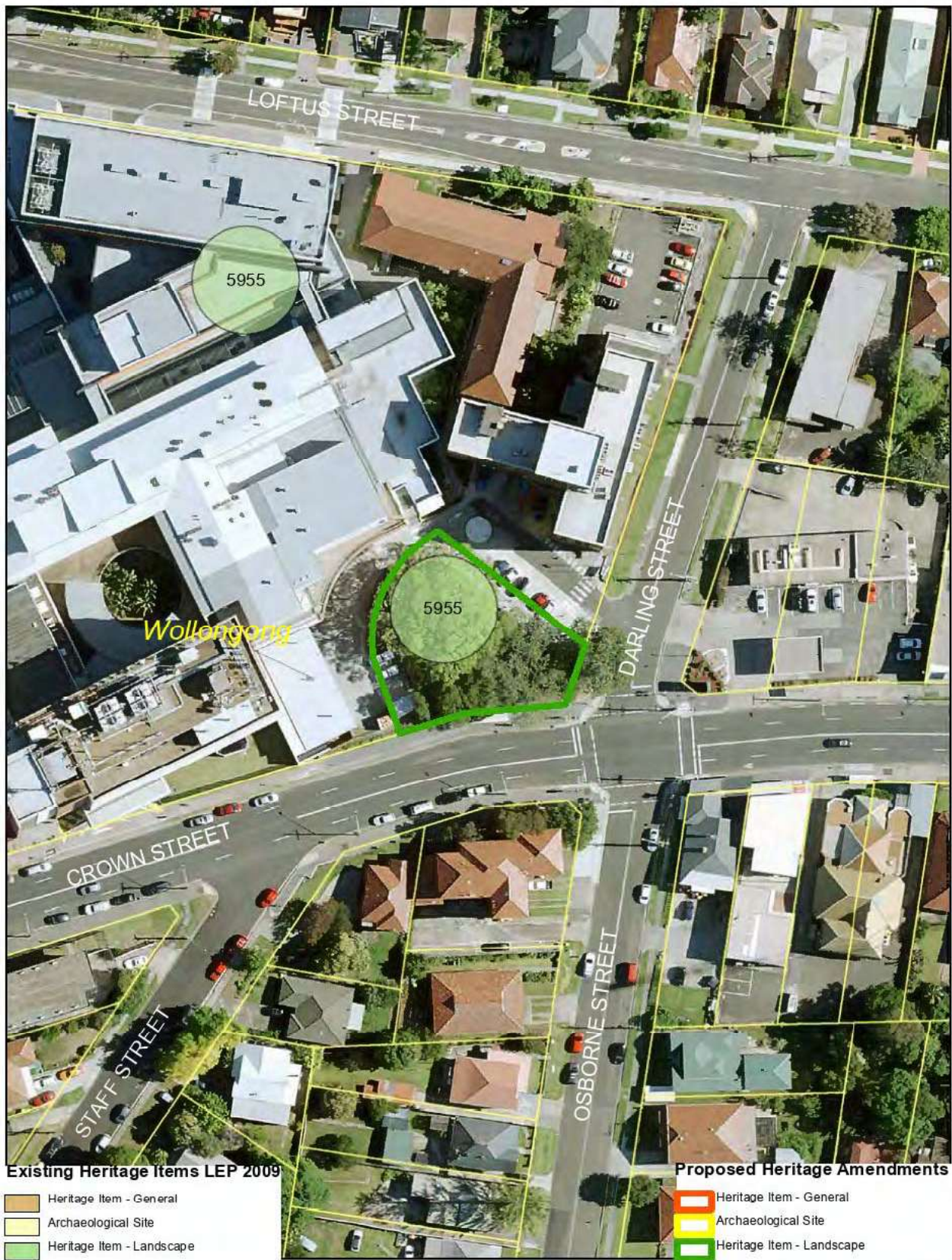


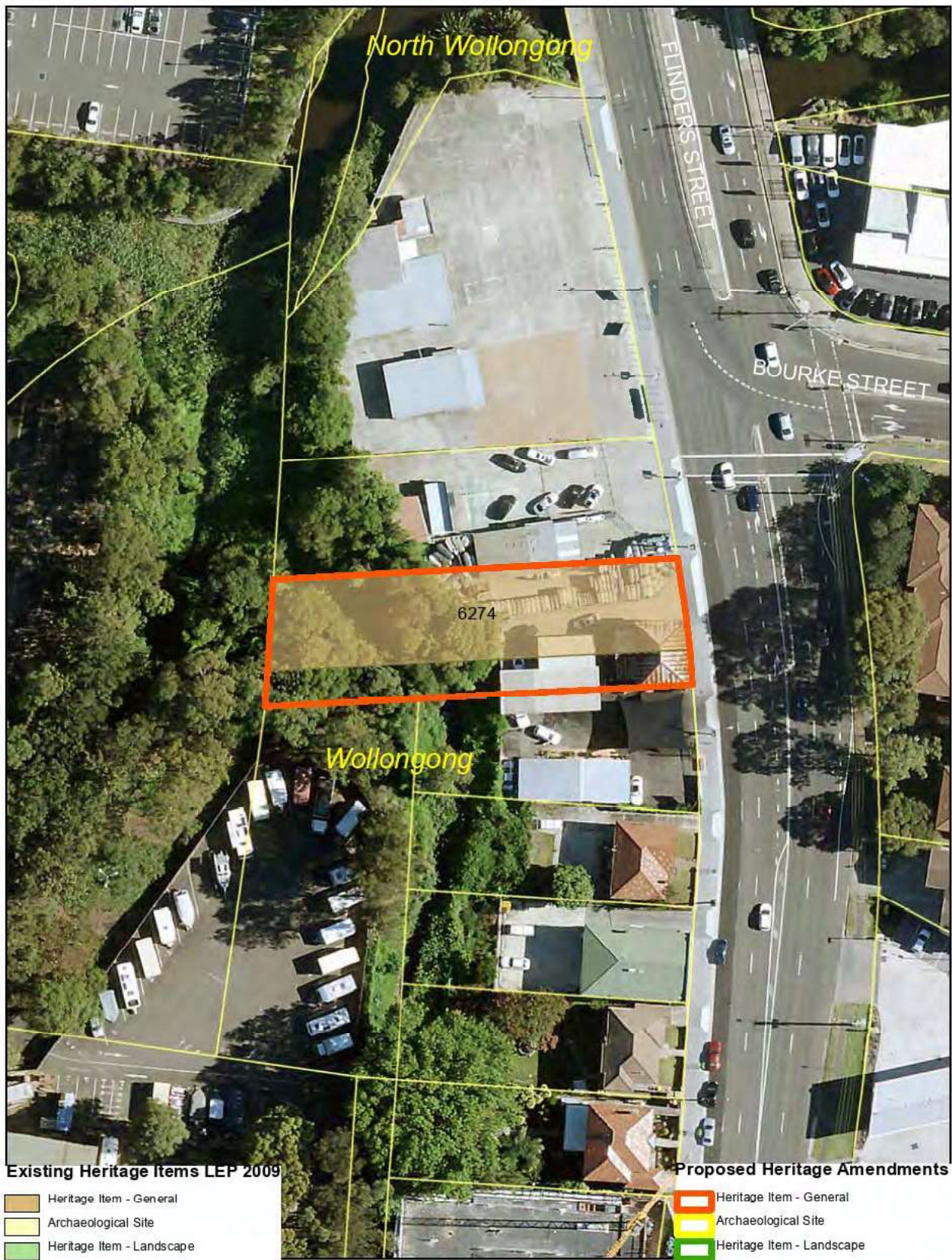




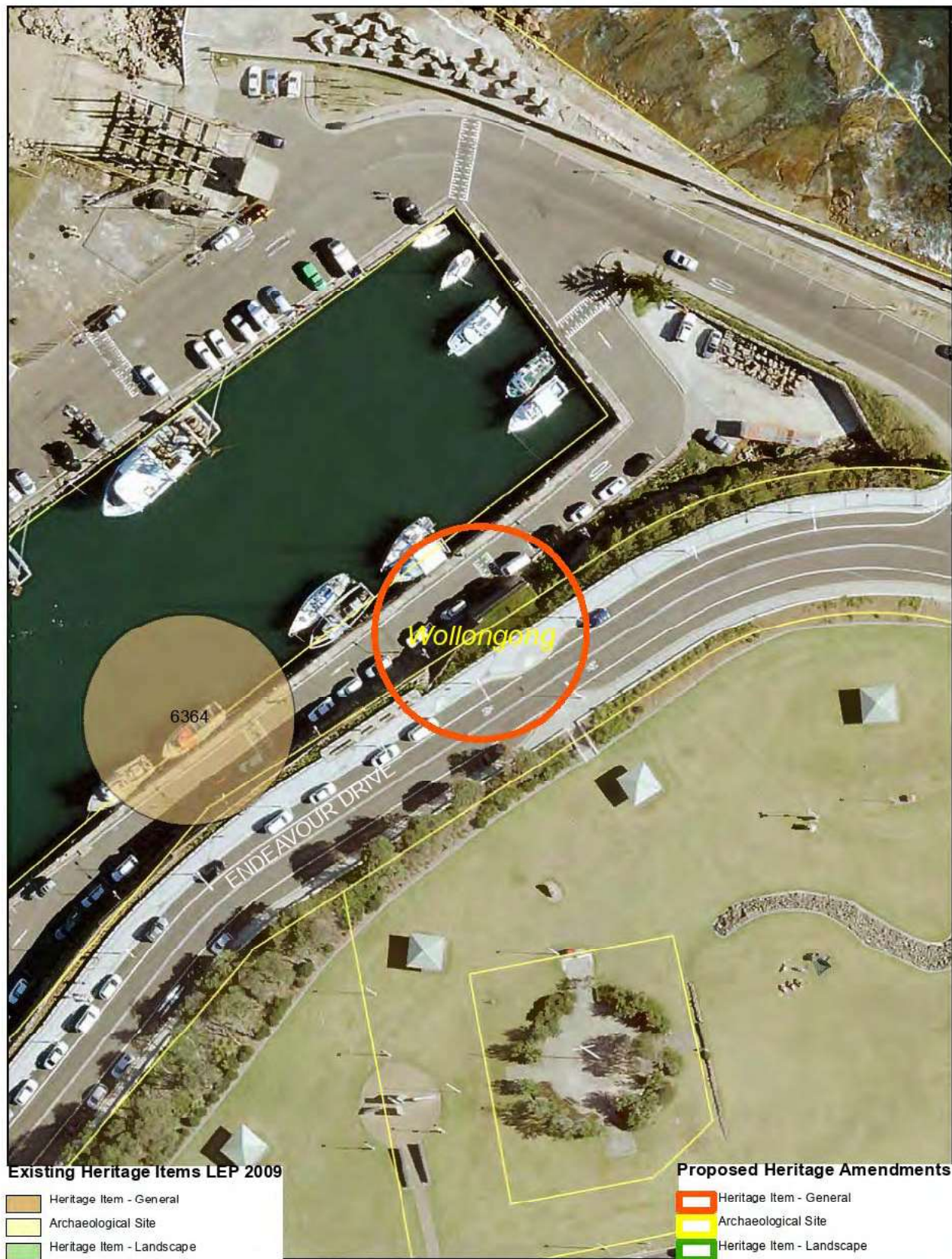




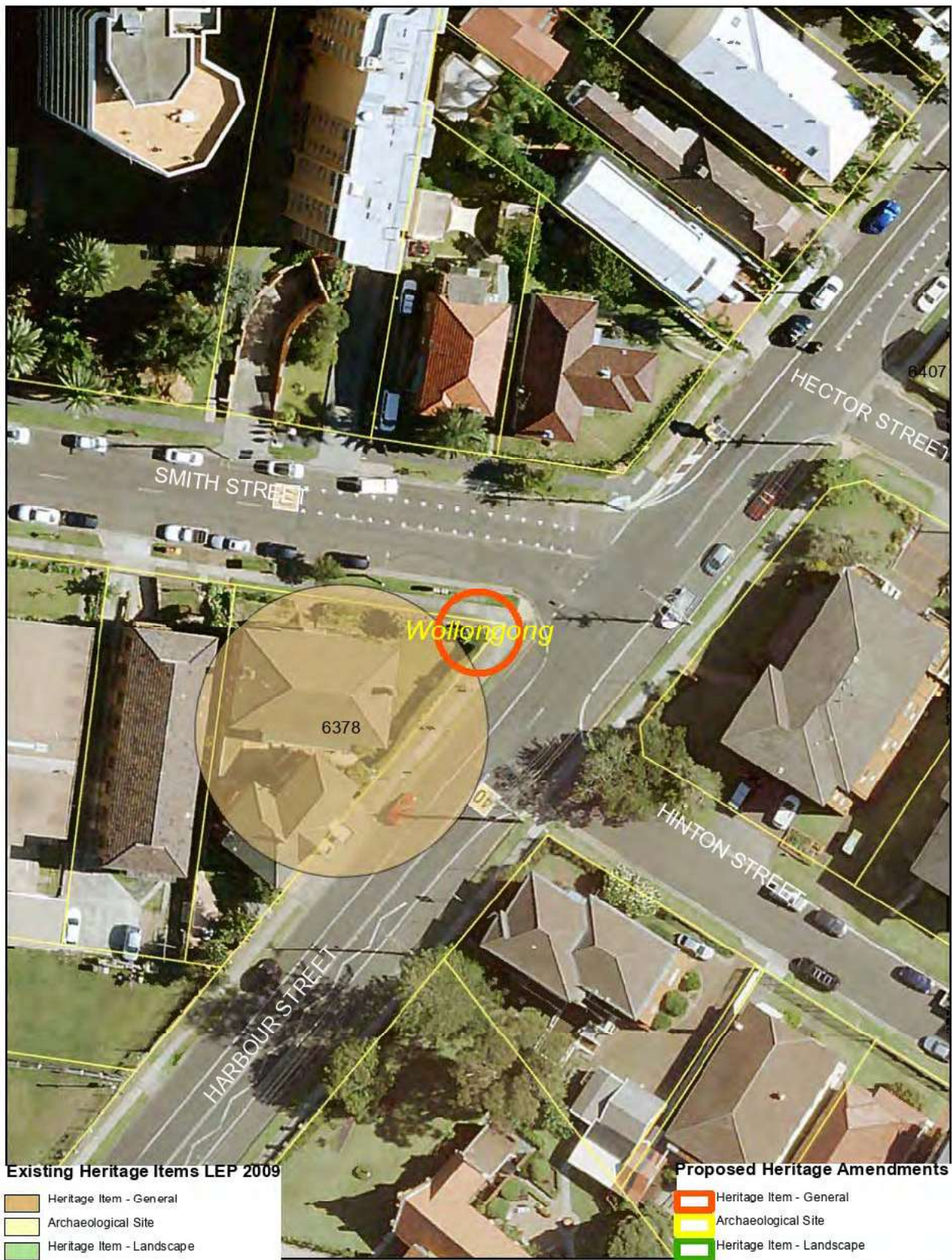








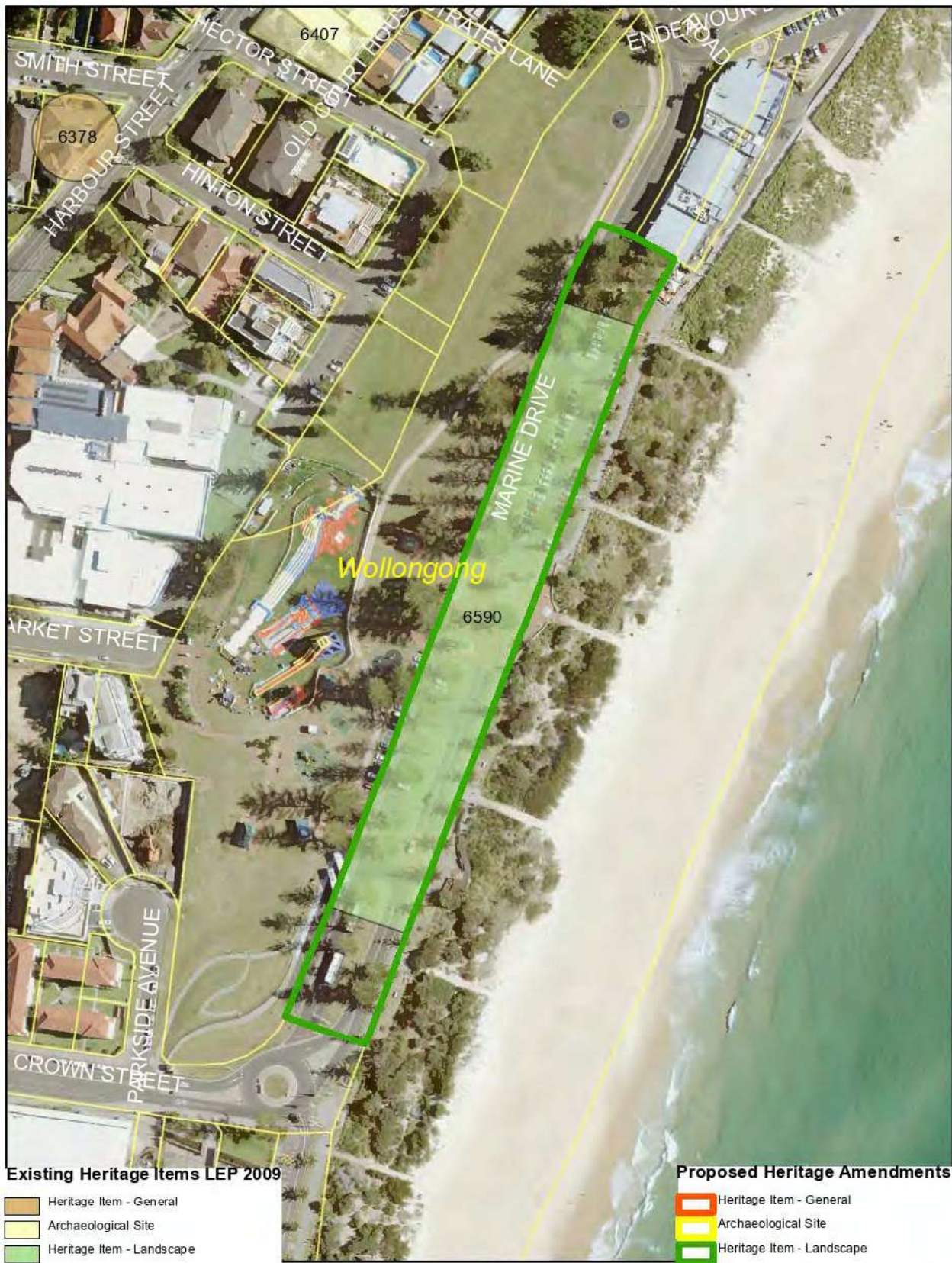




















REZONING REVIEW RECORD OF DECISION

DATE OF DECISION	2 April 2020
PANEL MEMBERS	Alison McCabe, Sue Francis, Steven Layman
APOLOGIES	Nil
DECLARATIONS OF INTEREST	Nil

REZONING REVIEW

Planning Proposal PP-2020/3 – Heritage Review Stage 1 – existing heritage items housekeeping amendment.

LOCAL PLANNING PANEL CONSIDERATION AND DECISION

The Panel considered the material in the Planning report listed at item 4 and the matters raised and/or observed at the meeting.




Based on this review, the Panel determined that the proposed instrument:

- ☒ **should** be submitted for a Gateway determination because the proposal has demonstrated strategic and site-specific merit
- ☐ **should not** be submitted for a Gateway determination because the proposal has
- ☐ not demonstrated strategic merit
 - ☐ has demonstrated strategic merit but not site-specific merit

The decision was unanimous.

REASONS FOR THE DECISION

The Panel reviewed the various changes to the heritage Schedule and is happy to adopt the recommendation of staff to progress the amendments for incorporation into the WLEP

PANEL MEMBERS	
 Alison McCabe	 Sue Francis
 Steven Layman	

SCHEDULE 1		
1	PANEL REF – LGA – DEPARTMENT REF - ADDRESS	PP-2020/3
2	LEP TO BE AMENDED	Wollongong LEP 2009
3	PROPOSED INSTRUMENT	n/a
4	MATERIAL CONSIDERED BY THE PANEL	Planning Report of Council